

RESOLUTION NO. 1502

A RESOLUTION of the Board of Commissioners of Public Utility District No.1 of Okanogan County relating to the acquisition by eminent domain of certain properties and property interests required for the installation and maintenance of structures and other improvements necessary for the possession, use, development and construction of facilities and infrastructure to support the implementation of the District's Methow Transmission Project and for use by the public for the transmission and distribution of electrical power within the District, describing the public convenience, use, and necessity of such properties and property interests; providing for condemnation, appropriation and use of the property interests, providing the mode of payment for cost of acquisition of the property interests, and directing the District's legal counsel and its designees to prosecute an action in Okanogan Superior Court.

WHEREAS, there exists within the District certain state owned properties identified in Exhibit 1 attached hereto, which are located within the corridor designated by the District for the installation and maintenance of the transmission line to be constructed as part of the Methow Transmission Project; and

WHEREAS; the Board of Commissioners finds that acquisition and use of easements over said properties as shown in Exhibit 2 is critical to the District's public purposes and it is in the public interest to acquire such easements in order to fulfill the District's mission of providing safe, reliable and cost-effective electrical power for its customers; and

WHEREAS, the State of Washington, as owner of said properties, has been previously notified of this intended action by certified mail and by publication as required by law; and

WHEREAS, the State of Washington and its legal counsel have been provided with the surveys attached as Exhibit 2 showing the exact location of the proposed easements over the properties; and

WHEREAS, easements over the parcels shown in Exhibit 1 are needed in addition to the easements over the parcels included in the PUD's prior Resolution No. 1489 adopted on August 18, 2009; and

WHEREAS, the District derives its condemnation authority pursuant to RCW 54.16.020, which provides that the District's condemnation authority shall be exercised in the same manner and by the same procedure as is provided for the exercise of that power by cities and towns of the state in the acquisition of property and property rights; and

WHEREAS, based on the foregoing, the Board of Commissioners of Public Utility District No. 1 of Okanogan County finds that it is necessary to acquire the subject property interests by eminent domain, now therefore,

BE IT RESOLVED BY THE BOARD OF COMMISSIONERS OF PUBLIC UTILITY DISTRICT NO. 1 OF OKANOGAN COUNTY as follows:

Section 1. Description. The real property interests (easements) that are the subject of this resolution are to run over and across the real property shown in Exhibit 2 described in Exhibit 1, and that description is incorporated herein by this reference.

Section 2. Public Use and Necessity. The public's use and necessity requires the acquisition of the real property interests described in Section 1 for possession, ownership, development, construction and maintenance of structures and infrastructure necessary to construct and maintain transmission line and support structures and other infrastructure necessary for the Methow Transmission Project, in order to allow for the safe and reliable transmission and distribution of electrical power to the District's customers.

Section 3. Condemnation of Property. The real property interests (easements) over and across the real property described in Section 1 herein are hereby condemned and appropriated and taken for the purposes described in Section 2 herein, only after just compensation has been made, or paid into the Court for the Owner thereof in a manner provided by law; provided, however, that the District may seek "early possession" as provided by statute.

Section 4. Costs of Acquisition. The costs of the acquisition provided for by this resolution shall be paid by the general fund of Okanogan County Public Utility District No.1, or such other funds of the District as may be provided by law.

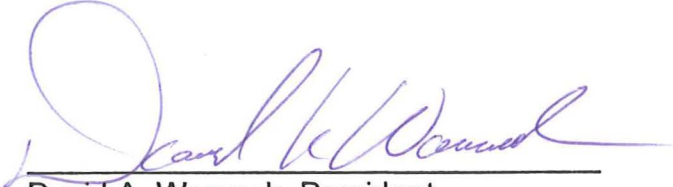
Section 5. Direction to and Authority of the District's Legal Counsel and Designees. The District's legal counsel and/or its designee is hereby authorized and directed to prosecute actions and proceedings in a manner provided by law to condemn, take, damage and appropriate the real property interests necessary to carry out the provisions of this resolution. In conducting such condemnation proceedings, the District's legal counsel is hereby authorized to enter into stipulations for the purpose of minimizing damages and/or providing for "early possession" of such property interests.

Section 6. Severability - Construction.

- (1) If a section, subsection, paragraph, sentence, clause, or phrase of this resolution is declared unconstitutional or invalid for any reason by any court of competent jurisdiction, such decision shall not affect the validity of the remaining portions of this resolution.
- (2) If the provisions of this resolution are found to be inconsistent with other provisions of the District's adopted procedures and policies, this resolution is deemed to control.

Section 7. Effective Date. This resolution shall take effect and be in full force and effect upon passage.

Passed by the Board of Commissioners this 23rd day of March, 2010.



David A. Womack, President




Ernest J. Bolz, Vice President

ATTEST:



Trish Butler, Secretary

APPROVED AS TO FORM:



Michael D. Howe, General Counsel
Okanogan County PUD

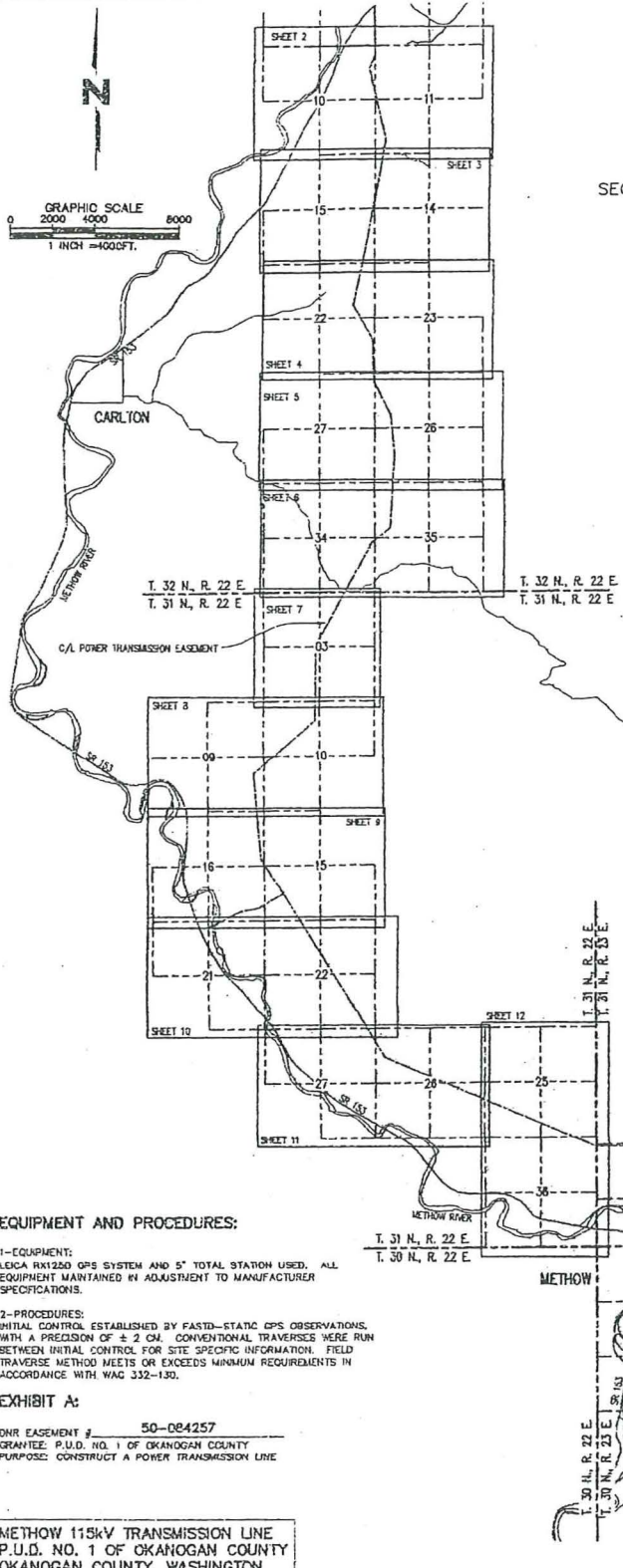
EXHIBIT 1

NW1/4 SW1/4 §35 T32 R22;
SE1/4 SW1/4 §26 T32 R22;
NW1/4 SW1/4 §22 T31 R22;
NW1/4 SW1/4 §26 T31 R22;
SE1/4 SW1/4 §16 T30 R 23;
SW1/4 SE1/4 §16 T30 R23;
SE1/4 SE1/4 §16 T30 R23;
NE1/4 SE1/4 §16 T30 R23,
All situated in Okanogan County, State of Washington.

EXHIBIT 2
Consisting of 13 pages

RECORD OF SURVEY FOR P.U.D. NO. 1 OF OKANOGAN COUNTY METHOW 115KV TRANSMISSION LINE EASEMENT SHEET INDEX

SECTIONS 10, 11, 14, 15, 22, 27, 26, 34 & 35, T. 32 N., R. 22 E., W.M.,
SECTIONS 03, 09, 10, 15, 16, 21, 22, 25, 26, 27 & 36, T. 31 N., R. 22 E., W.M.,
AND SECTIONS 31 & 32, T. 31 N., R. 23 E., W.M.,
AND SECTIONS 09 & 16, T. 30 N., R. 23 E., W.M.,
OKANOGAN COUNTY, WASHINGTON



NARRATIVE LEGAL DESCRIPTIONS:

SE 1/4 NE 1/4	SEC. 10, T. 32 N., R. 22 E., W.M.
W 1/2 SW 1/4	SEC. 11, T. 32 N., R. 22 E., W.M.
W 1/2 NW 1/4	SEC. 14, T. 32 N., R. 22 E., W.M.
SE 1/4 NE 1/4, SE 1/4 SW 1/4, SE 1/4	SEC. 15, T. 32 N., R. 22 E., W.M.
E 1/2 SE 1/4	SEC. 22, T. 32 N., R. 22 E., W.M.
W 1/2 NW 1/4, SE 1/4 NW 1/4, SW 1/4	SEC. 28, T. 32 N., R. 22 E., W.M.
E 1/2 NE 1/4, SW 1/4 NE 1/4	SEC. 27, T. 32 N., R. 22 E., W.M.
NE 1/4 SE 1/4, S 1/2 SE 1/4, NE 1/4 NW 1/4	SEC. 34, T. 32 N., R. 22 E., W.M.
SW 1/4 NE 1/4, W 1/2 NW 1/4, SE 1/4 NW 1/4	SEC. 35, T. 32 N., R. 22 E., W.M.
NW 1/4 SW 1/4, N 1/2 SE 1/4, SW 1/4 SE 1/4	SEC. 03, T. 31 N., R. 22 E., W.M.
S 1/2 NE 1/4, E 1/2 SW 1/4, SE 1/4, SE 1/4 NW 1/4	SEC. 09, T. 31 N., R. 22 E., W.M.
E 1/2 SE 1/4	SEC. 10, T. 31 N., R. 22 E., W.M.
NW 1/4 NE 1/4, E 1/2 NW 1/4, SW 1/4 NW 1/4	SEC. 15, T. 31 N., R. 22 E., W.M.
NW 1/4 SW 1/4	SEC. 16, T. 31 N., R. 22 E., W.M.
SW 1/4 NW 1/4, W 1/2 SW 1/4, SE 1/4 SW 1/4	SEC. 22, T. 31 N., R. 22 E., W.M.
E 1/2 E 1/2, GL. 10 (SW 1/4 SE 1/4)	SEC. 25, T. 31 N., R. 22 E., W.M.
SW 1/4 NE 1/4, NE 1/4 NW 1/4, S 1/2 NW 1/4	SEC. 28, T. 31 N., R. 22 E., W.M.
N 1/2 SE 1/4, SE 1/4 SE 1/4, GL. 1 (NW 1/4 SW 1/4)	SEC. 29, T. 31 N., R. 22 E., W.M.
SW 1/4, S 1/2 SE 1/4	SEC. 09, T. 30 N., R. 23 E., W.M.
SW 1/4 NE 1/4, SE 1/4 NW 1/4, N 1/2 SE 1/4	SEC. 16, T. 30 N., R. 23 E., W.M.
NW 1/4 SW 1/4	
N 1/2 NE 1/4, SE 1/4 NE 1/4, NE 1/4 NW 1/4	
E 1/2 SW 1/4	
E 1/2 NE 1/4, S 1/2 SE 1/4, NE 1/4 SE 1/4	
SE 1/4 SW 1/4	

BASIS OF BEARING:

WASHINGTON STATE COORDINATE SYSTEM, NORTH ZONE, NAD 83/91, DERIVED FROM G.P.S. OBSERVATIONS UTILIZING N.G.S. C.O.R.S. STATION BREW.

THE DISTANCES AND AREAS SHOWN HEREON ARE GRID VALUES WITH AN AVERAGED COMBINED FACTOR OF 0.99984718148.

TO OBTAIN GROUND DISTANCES AND AREAS MULTIPLY MAP VALUES BY 1.00015283187.

SURVEYOR'S NOTES:

THIS SURVEY WAS PERFORMED WITHOUT THE BENEFIT OF A CURRENT TITLE SEARCH AND DOES NOT WARRANT AGAINST EASEMENTS, OR DEFECTS OF TITLE, THAT MAY OR MAY NOT AFFECT SAID PROPERTY UNLESS OTHERWISE NOTED OR SHOWN.

THE PURPOSE OF THIS RECORD OF SURVEY IS TO DELINEATE A 100 FOOT WIDE UTILITY EASEMENT FOR THE METHOW 115KV TRANSMISSION LINE, ASSOCIATED PERMANENT ACCESS ROAD EASEMENTS (P.A.R.) AND TEMPORARY CONSTRUCTION ACCESS EASEMENTS (T.C.A.) ACROSS THE ABOVE DESCRIBED WASHINGTON STATE DEPARTMENT OF NATURAL RESOURCES PUBLIC LANDS.

STATE ROUTES WERE NOT DELINEATED AND ARE GRAPHICALLY SHOWN IN THEIR APPROXIMATE LOCATIONS. THE PERMANENT ACCESS ROADS WERE DELINEATED ONLY AS THEY CROSSED PARCEL BOUNDARY LINES. OTHERWISE THEY ARE GRAPHICALLY SHOWN IN THEIR APPROXIMATE LOCATIONS. THE PARCEL ACREAGES SHOWN INCLUDE THE AREA OCCUPIED BY THE ROADS. NO DETERMINATION OF OWNERSHIP OF COUNTY AND STATE ROAD RIGHT OF WAY WAS MADE DURING THIS SURVEY.

THE ORDINARY HIGH WATER OF THE METHOW RIVER WAS NOT DELINEATED AND IS GRAPHICALLY SHOWN IN ITS APPROXIMATE LOCATION. THE GOVERNMENT LOT ACREAGES (WHERE APPLICABLE) WERE CALCULATED FROM THE APPROXIMATE LOCATION OF THE ORDINARY HIGH WATER.

EQUIPMENT AND PROCEDURES:

1-EQUIPMENT:
LEICA RX1250 GPS SYSTEM AND 5" TOTAL STATION USED. ALL EQUIPMENT MAINTAINED IN ADJUSTMENT TO MANUFACTURER SPECIFICATIONS.

2-PROCEDURES:
INITIAL CONTROL ESTABLISHED BY FAST-D-STATIC GPS OBSERVATIONS, WITH A PRECISION OF ± 2 CM. CONVENTIONAL TRAVERSES WERE RUN BETWEEN INITIAL CONTROL FOR SITE SPECIFIC INFORMATION. FIELD TRAVERSE METHOD MEETS OR EXCEEDS MINIMUM REQUIREMENTS IN ACCORDANCE WITH WAC 332-130.

EXHIBIT A:

DNR EASEMENT # 50-024257
GRANTEE: P.U.D. NO. 1 OF OKANOGAN COUNTY
PURPOSE: CONSTRUCT A POWER TRANSMISSION LINE

METHOW 115KV TRANSMISSION LINE
P.U.D. NO. 1 OF OKANOGAN COUNTY
OKANOGAN COUNTY, WASHINGTON

DATE: 09/10/09 SCALE: 1"=4000' DRAWN: EJS/RLB JOB NO. 08124

RECORDER'S CERTIFICATE NO.

FILED FOR RECORD THIS _____ DAY OF _____, 20____
AT _____ M. IN BOOK _____ OF _____ AT PAGE _____
AT THE REQUEST OF _____ OKANOGAN COUNTY, P.U.D. NO. 1

11/12/2009 02:47:28 PM V: 5 P: 262 3148935
Recording Fee \$175.00 SHEET 1 OF 13
SURVEYING ENGINEERS
Okanogan County Washington

MAHAC

SURVEYOR'S CERTIFICATE:

THIS MAP CORRECTLY REPRESENTS A SURVEY MADE BY ME OR UNDER MY DIRECTION IN CONFORMANCE WITH THE REQUIREMENTS OF THE SURVEY RECORDING ACT AT THE REQUEST OF OKANOGAN COUNTY, P.U.D. IN JULY, 2009.

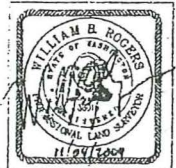
Will B. Brown
PROFESSIONAL LAND SURVEYOR

38016
CERTIFICATE NO.

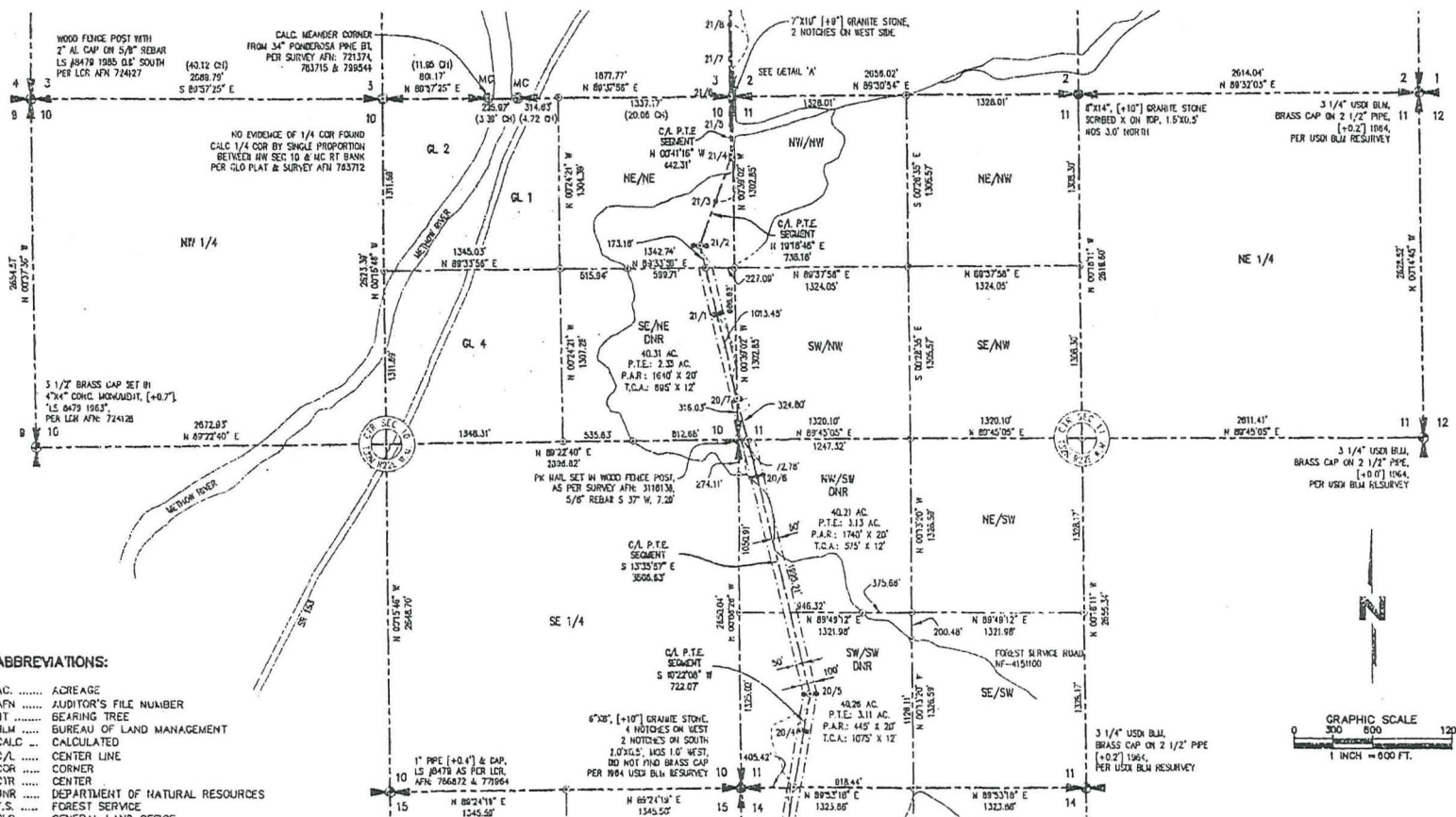
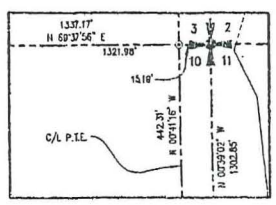
DRS D.R. STRONG
CONSULTING ENGINEERS

ENGINEERS PLANNERS SURVEYORS

10904 NE 38th PLACE, SUITE 101 425.827.2083 OFFICE
KORLAND, WA 98033 800.662.1402 TOLL FREE
www.drseng.com 425.827.2423 FAX



DETAIL 'A'
 NTS



ABBREVIATIONS:

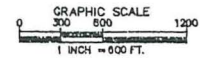
- AC ACREAGE
- AFN AUDITOR'S FILE NUMBER
- BT BEARING TREE
- BLM BUREAU OF LAND MANAGEMENT
- CALC CALCULATED
- C/L CENTER LINE
- COR CORNER
- CTR CENTER
- DNR DEPARTMENT OF NATURAL RESOURCES
- F.S. FOREST SERVICE
- GLO GENERAL LAND OFFICE
- G.N. GENERAL NOTE
- LS LICENSED SURVEYOR
- LOR LAND CORNER RECORD
- MC MEANDER CORNER
- MOS MOUND OF STONE
- NTS NOT TO SCALE
- P.I. POINT OF INTERSECTION
- P.A.R. ... PERMANENT ACCESS ROAD EASEMENT
- P.T.E. ... POWER TRANSMISSION EASEMENT
- R/W RIGHT OF WAY
- RT RIGHT
- S.F. SQUARE FEET
- SR STATE ROUTE
- SEC SECTION
- T.C.A. ... TEMPORARY CONSTRUCTION ACCESS EASEMENT
- US UNITED STATES
- USDI ... UNITED STATES DEPT. OF INTERIOR
- USDA ... UNITED STATES DEPT. OF AGRICULTURE
- WC WITNESS CORNER
- W.M. WILLAMETTE MERIDIAN
- [+/-] ... DISTANCE OF MONUMENT ABOVE OR BELOW GROUND

SYMBOLS:

- (12.34 CH) RECORD DATA FROM GLO PLAT IN CHAINS
- ⊙ MONUMENT FOUND AS NOTED
- ⊙ STONE MONUMENT FOUND AS NOTED
- ⊙ CALCULATED POSITION, NOT SET OR FOUND
- ⊙ SECTION CORNER
- ⊙ SECTION CORNER
- ⊙ POWER POLE STRUCTURE LOCATION
- ⊙ POWER POLE STRUCTURE LOCATION

LEGEND:

- CENTERLINE PROPOSED POWER TRANSMISSION EASEMENT
- EDGE OF PROPOSED POWER TRANSMISSION EASEMENT
- EXISTING PERMANENT ACCESS ROADS (APPROXIMATE LOCATION)
- PROPOSED TEMPORARY CONSTRUCTION ACCESS ROADS (APPROXIMATE LOCATION)

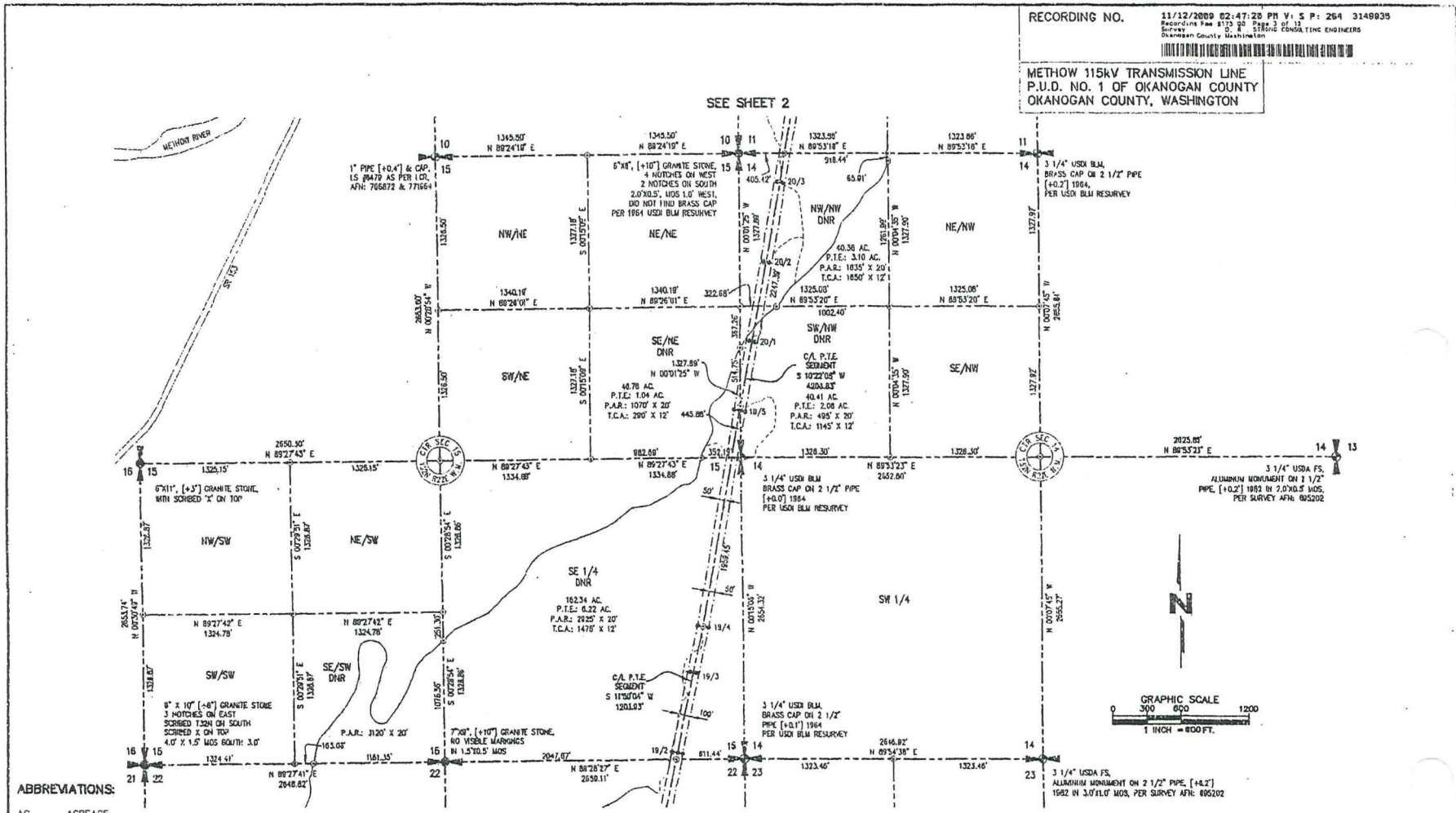


DRS D.R. STRONG
 CONSULTING ENGINEERS
 ENGINEERS PLANNERS SURVEYORS

10804 NE 38th PLACE, SUITE 101
 KIRKLAND, WA 98033
 425.827.3083 OFFICE
 800.982.1402 TOLL FREE
 425.827.2423 FAX
 www.drstong.com

SEC. 10 & 11, T. 32 N., R. 22 E., W.M.

METHOW 115KV TRANSMISSION LINE
 P.U.D. NO. 1 OF OKANOGAN COUNTY
 OKANOGAN COUNTY, WASHINGTON



- ABBREVIATIONS:**
- AC. ACREAGE
 - AFN AUDITOR'S FILE NUMBER
 - BT BEARING TREE
 - BLM BUREAU OF LAND MANAGEMENT
 - CALC ... CALCULATED
 - C/L CENTER LINE
 - COR CORNER
 - CTR CENTER
 - DNR DEPARTMENT OF NATURAL RESOURCES
 - F.S. FOREST SERVICE
 - GLO GENERAL LAND OFFICE
 - G.N. GENERAL NOTE
 - LS LICENSED SURVEYOR
 - LCP LAND CORNER RECORD
 - MC MEANDER CORNER
 - MOS MOUND OF STONE
 - NTS NOT TO SCALE
 - P.I. POINT OF INTERSECTION
 - P.A.R. ... PERMANENT ACCESS ROAD EASEMENT
 - P.T.E. ... POWER TRANSMISSION EASEMENT
 - R/W RIGHT OF WAY
 - RT RIGHT
 - S.F. SQUARE FEET
 - SR STATE ROUTE
 - SEC SECTION
 - T.C.A. ... TEMPORARY CONSTRUCTION ACCESS EASEMENT
 - US UNITED STATES
 - USDI ... UNITED STATES DEPT. OF INTERIOR
 - USDA ... UNITED STATES DEPT. OF AGRICULTURE
 - WC WITNESS CORNER
 - W.M. WILLAMETTE MERIDIAN
 - [+/-] ... DISTANCE OF MONUMENT ABOVE OR BELOW GROUND

- SYMBOLS:**
- (12.34 CH)RECORD DATA FROM GLO PLAT IN CHAINS
 - ⊕MONUMENT FOUND AS NOTED
 - ⊙STONE MONUMENT FOUND AS NOTED
 - ⊙CALCULATED POSITION, NOT SET OR FOUND
 - ⊕X SECTION
 - ⊕SECTION CORNER
 -POWER POLE STRUCTURE LOCATION
 -POWER POLE STRUCTURE LOCATION

- LEGEND:**
- CENTERLINE PROPOSED POWER TRANSMISSION EASEMENT
 - EDGE OF PROPOSED POWER TRANSMISSION EASEMENT
 - EXISTING PERMANENT ACCESS ROADS (APPROXIMATE LOCATION)
 - PROPOSED TEMPORARY CONSTRUCTION ACCESS ROADS (APPROXIMATE LOCATION)

SEE SHEET 4

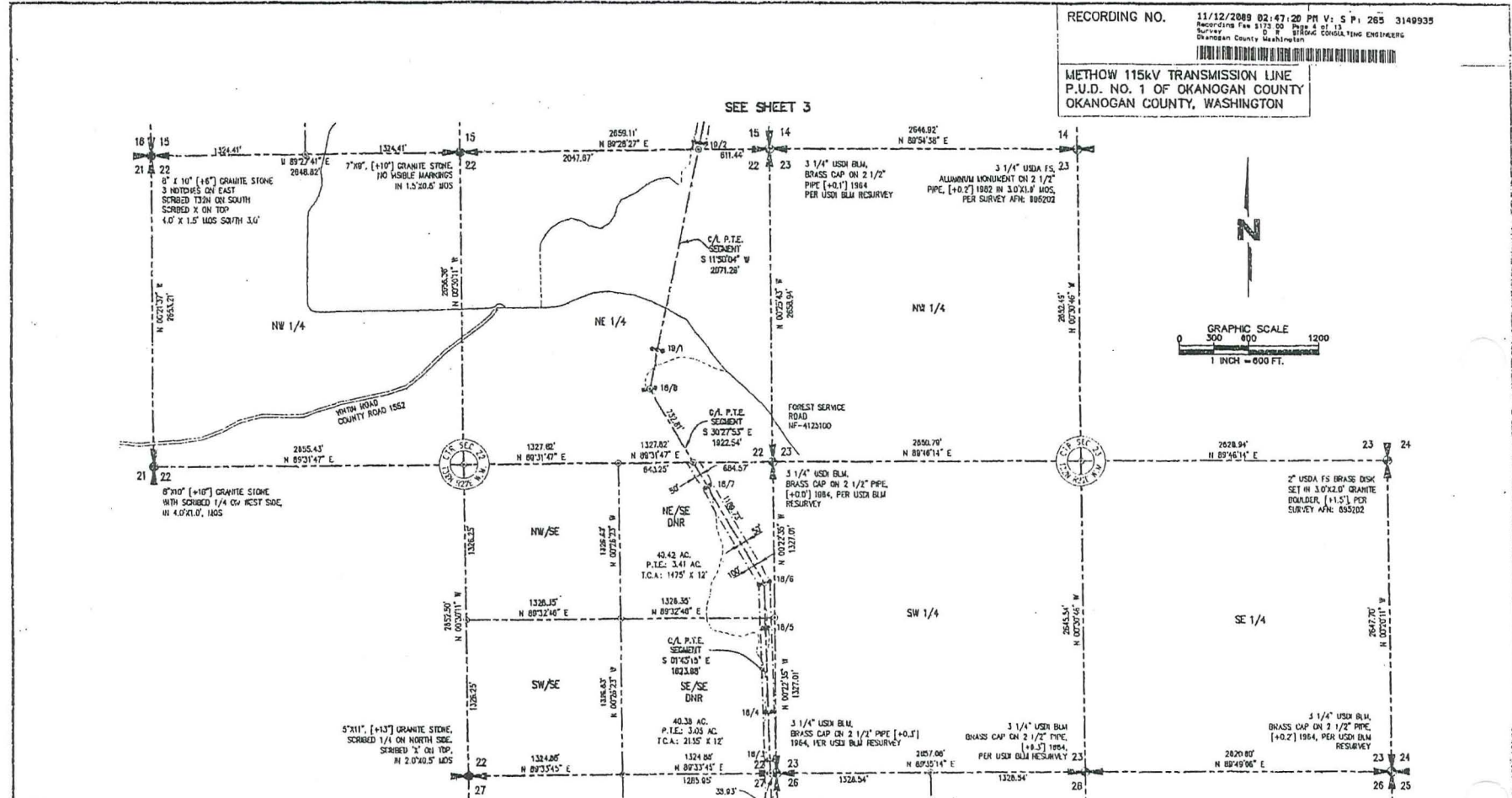
SEE SHEET 2



DRS D.R. STRONG
 CONSULTING ENGINEERS
 ENGINEERS PLANNERS SURVEYORS

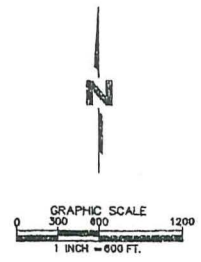
10004 NE 38th PLACE, SUITE 101
 KIRKLAND, WA 98033
 425.827.3063 OFFICE
 800.962.1402 TOLL FREE
 425.827.2423 FAX
 www.drststrong.com

METHOW 115KV TRANSMISSION LINE
 P.U.D. NO. 1 OF OKANOGAN COUNTY
 OKANOGAN COUNTY, WASHINGTON



SEE SHEET 3

SEE SHEET 5



ABBREVIATIONS:

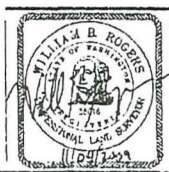
- AC. ACREAGE
- AFN AUDITOR'S FILE NUMBER
- BT BEARING TREE
- BLM BUREAU OF LAND MANAGEMENT
- CALC CALCULATED
- C/L CENTER LINE
- COR CORNER
- CTR CENTER
- DNR DEPARTMENT OF NATURAL RESOURCES
- F.S. FOREST SERVICE
- GLO GENERAL LAND OFFICE
- G.N. GENERAL NOTE
- LS LICENSED SURVEYOR
- LCR LAND CORNER RECORD
- LC LEASER CORNER
- MOS MOUND OF STONE
- NTS NOT TO SCALE
- P.I. POINT OF INTERSECTION
- P.A.R. .. PERMANENT ACCESS ROAD EASEMENT
- P.T.E. .. POWER TRANSMISSION EASEMENT
- R/W RIGHT OF WAY
- RT RIGHT
- S.F. SQUARE FEET
- SR STATE ROUTE
- SEC SECTION
- T.C.A. .. TEMPORARY CONSTRUCTION ACCESS EASEMENT
- US UNITED STATES
- USDI ... UNITED STATES DEPT. OF INTERIOR
- USDA .. UNITED STATES DEPT. OF AGRICULTURE
- WC WITNESS CORNER
- W.M. WILLAMETTE MERIDIAN
- [+/-]... DISTANCE OF MONUMENT ABOVE OR BELOW GROUND

SYMBOLS:

- (12.34 CH)RECORD DATA FROM GLO PLAT IN CHAINS
-MONUMENT FOUND AS NOTED
-STONE MONUMENT FOUND AS NOTED
-CALCULATED POSITION, NOT SET OR FOUND
- ⊕SECTION CORNER
- ⊕SECTION CORNER
-POWER POLE STRUCTURE LOCATION
-POWER POLE STRUCTURE LOCATION

LEGEND:

- CENTERLINE PROPOSED POWER TRANSMISSION EASEMENT
- EDGE OF PROPOSED POWER TRANSMISSION EASEMENT
- EXISTING PERMANENT ACCESS ROADS (APPROXIMATE LOCATION)
- PROPOSED TEMPORARY CONSTRUCTION ACCESS ROADS (APPROXIMATE LOCATION)

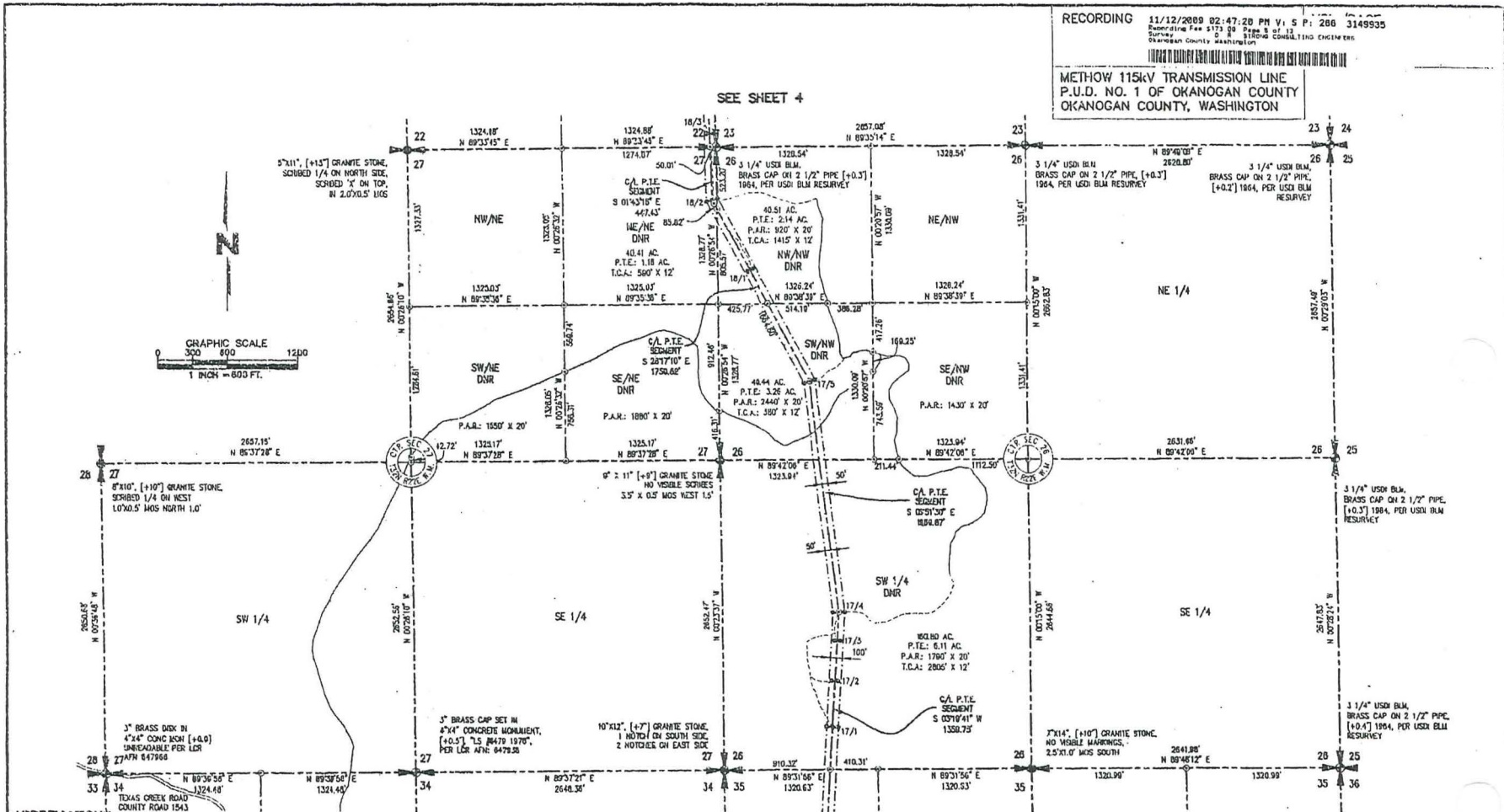


DRS D.R. STRONG
 CONSULTING ENGINEERS
 ENGINEERS PLANNERS SURVEYORS

10804 NE 38th PLACE, SUITE 101
 KIRKLAND, WA 98033
 425 827 3063 OFFICE
 800.962.1402 TOLL FREE
 425 827 2423 FAX
 www.drstong.com

SEC. 22, T. 32 N., R. 22 E., W.M.

METHOW 115kV TRANSMISSION LINE
 P.U.D. NO. 1 OF OKANOGAN COUNTY
 OKANOGAN COUNTY, WASHINGTON



SEE SHEET 4

SEE SHEET 8

ABBREVIATIONS:

- AC ACREAGE
- AFN AUDITOR'S FILE NUMBER
- BT BEARING TREE
- BLM BUREAU OF LAND MANAGEMENT
- CA/C CALCULATED
- C/L CENTER LINE
- COR CORNER
- CTR CENTER
- DNR DEPARTMENT OF NATURAL RESOURCES
- F.S. FOREST SERVICE
- GLO GENERAL LAND OFFICE
- G.N. GENERAL NOTE
- LS LICENSED SURVEYOR
- LCR LAND CORNER RECORD
- MC MEANDER CORNER
- MOS MOUND OF STONE
- NTS NOT TO SCALE
- P.I. POINT OF INTERSECTION
- P.A.R. ... PERMANENT ACCESS ROAD EASEMENT
- F.T.E. ... POWER TRANSMISSION EASEMENT
- R/W RIGHT OF WAY
- RT RIGHT
- S.F. SQUARE FEET
- SR STATE ROUTE
- SEC SECTION
- T.C.A. ... TEMPORARY CONSTRUCTION ACCESS EASEMENT
- US UNITED STATES
- USDI ... UNITED STATES DEPT. OF INTERIOR
- USDA ... UNITED STATES DEPT. OF AGRICULTURE
- WC WITNESS CORNER
- W.M. WILLAMETTE MERIDIAN
- [+/-] ... DISTANCE OF MONUMENT ABOVE OR BELOW GROUND

SYMBOLS:

- (12.34 CH)RECORD DATA FROM GLO PLAT IN CHAINS
- ⊙MONUMENT FOUND AS NOTED
- ⊙STONE MONUMENT FOUND AS NOTED
- ⊙CALCULATED POSITION, NOT SET OR FOUND
- ⊙SECTION
- ⊙SECTION CORNER
- ⊙POWER POLE STRUCTURE LOCATION
- ⊙POWER POLE STRUCTURE LOCATION

LEGEND:

- CENTERLINE PROPOSED POWER TRANSMISSION EASEMENT
- EDGE OF PROPOSED POWER TRANSMISSION EASEMENT
- EXISTING PERMANENT ACCESS ROADS (APPROXIMATE LOCATION)
- PROPOSED TEMPORARY CONSTRUCTION ACCESS ROADS (APPROXIMATE LOCATION)

SHEET 5 OF 13



DRS D.R. STRONG
 CONSULTING ENGINEERS
 ENGINEERS PLANNERS SURVEYORS

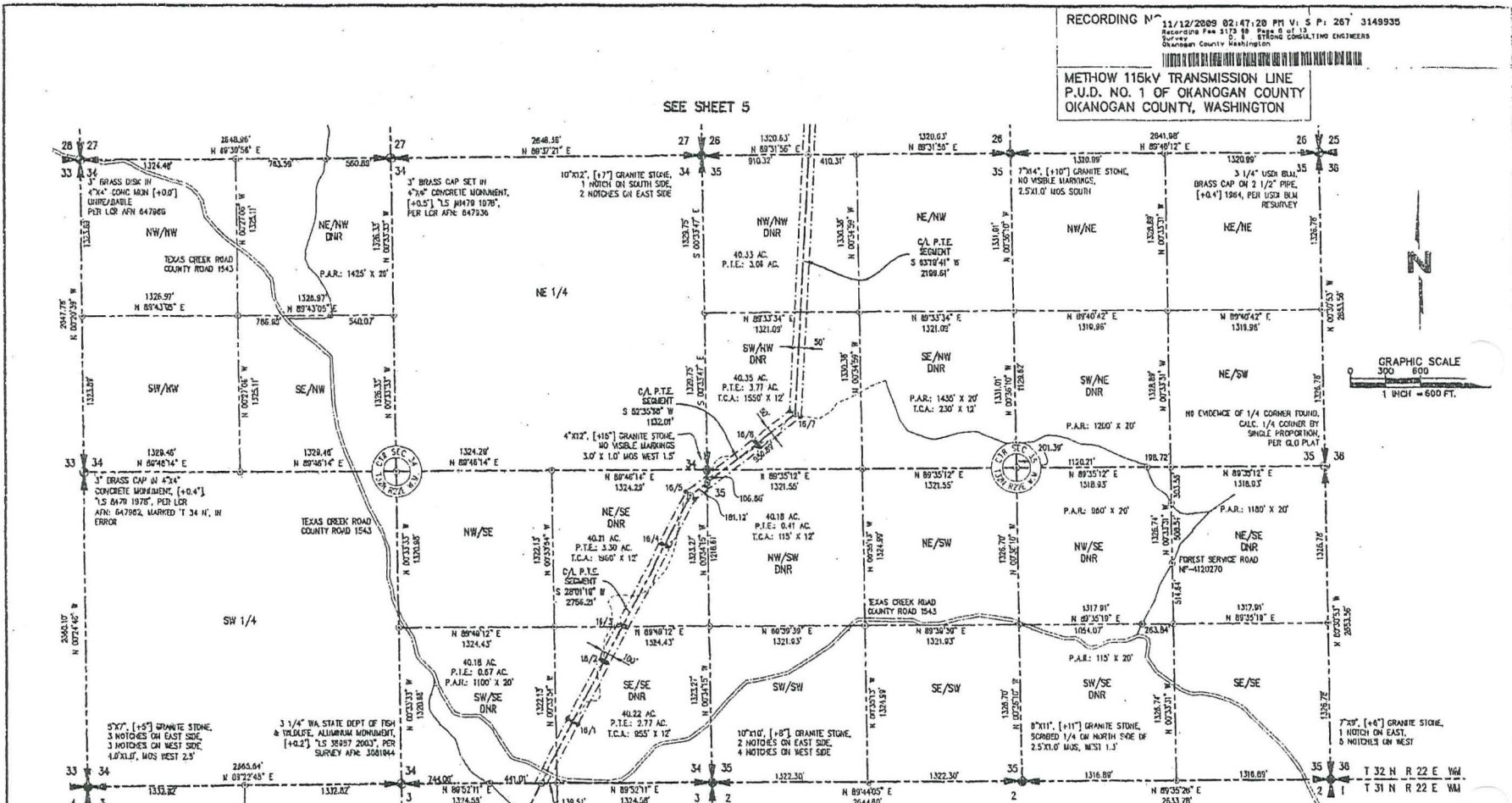
10804 NE 38th PLACE, SUITE 101
 KIRKLAND, WA 98033
 425.827.3063 OFFICE
 800.882.1402 TOLL FREE
 425.827.2423 FAX
 www.draftstrong.com

SEC. 26 & 27, T. 32 N., R. 22 E., W.M.

DATE 09/10/09 SCALE 1"=800' DRAWN EJS/RLB JOB NO. 08124

VOL./PAGE

METHOW 116KV TRANSMISSION LINE
 P.U.D. NO. 1 OF OKANOGAN COUNTY
 OKANOGAN COUNTY, WASHINGTON



SEE SHEET 5

SEE SHEET 7

ABBREVIATIONS:

- AC ACREAGE
- AFN AUDITOR'S FILE NUMBER
- BT BEARING TREE
- BLM BUREAU OF LAND MANAGEMENT
- CALC ... CALCULATED
- C/L CENTER LINE
- COR CORNER
- CTR CENTER
- DNR DEPARTMENT OF NATURAL RESOURCES
- F.S. FOREST SERVICE
- GLO GENERAL LAND OFFICE
- G.N. GENERAL NOTE
- LS LICENSED SURVEYOR
- LOR LAND CORNER RECORD
- MC MEANDER CORNER
- MOS MOUND OF STONE
- NTS NOT TO SCALE
- P.I. POINT OF INTERSECTION
- P.A.R. ... PERMANENT ACCESS ROAD EASEMENT
- P.T.E. ... POWER TRANSMISSION EASEMENT
- R/W RIGHT OF WAY
- RT RIGHT
- S.F. SQUARE FEET
- SR STATE ROUTE
- SEC SECTION
- T.C.A. ... TEMPORARY CONSTRUCTION ACCESS EASEMENT
- U.S. UNITED STATES
- USDI ... UNITED STATES DEPT. OF INTERIOR
- USDA ... UNITED STATES DEPT. OF AGRICULTURE
- WC WITNESS CORNER
- W.M. ... WILLAMETTE MERIDIAN
- +/-]... DISTANCE OF MONUMENT ABOVE OR BELOW GROUND

SYMBOLS:

- (12.34 CH)RECORD DATA FROM GLO PLAT IN CHAINS
- ⊕MONUMENT FOUND AS NOTED
- ⊙STONE MONUMENT FOUND AS NOTED
- ⊙CALCULATED POSITION, NOT SET OR FOUND
- ⊕SECTION
- ⊕SECTION CORNER
- ⊙POWER POLE STRUCTURE LOCATION
- ⊙POWER POLE STRUCTURE LOCATION

LEGEND:

- CENTERLINE PROPOSED POWER TRANSMISSION EASEMENT
- EDGE OF PROPOSED POWER TRANSMISSION EASEMENT
- EXISTING PERMANENT ACCESS ROADS (APPROXIMATE LOCATION)
- PROPOSED TEMPORARY CONSTRUCTION ACCESS ROADS (APPROXIMATE LOCATION)



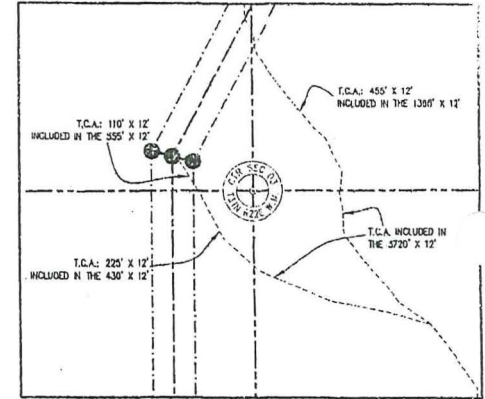
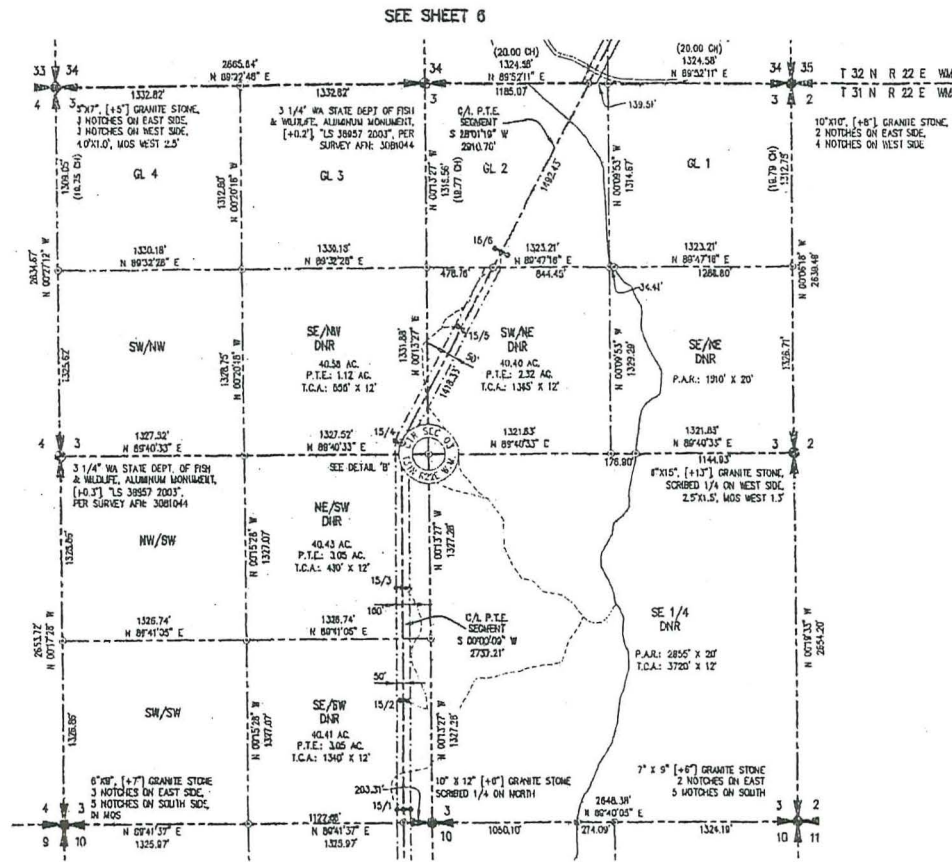
DRS D.R. STRONG
 CONSULTING ENGINEERS
 ENGINEERS PLANNERS SURVEYORS

10804 NE 38th PLACE, SUITE 101
 KIRKLAND, WA 98033
 425.827.3083 OFFICE
 800.982.1402 TOLL FREE
 425.827.2423 FAX
 www.drstrong.com

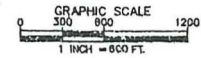
SEC. 34 & 35, T. 32 N., R. 22 E., W.M.
 DATE 08/10/09 SCALE 1"=600' DRAWN EJS/RLB JOB NO. 08124

VOL./PAGE

METHOW 115kV TRANSMISSION LINE
 P.U.D. NO. 1 OF OKANOGAN COUNTY
 OKANOGAN COUNTY, WASHINGTON



DETAIL 'B'
 NTS



ABBREVIATIONS:

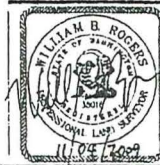
- AC ACREAGE
- AFN AUDITOR'S FILE NUMBER
- BT BEARING TREE
- BLM BUREAU OF LAND MANAGEMENT
- CALC CALCULATED
- C/L CENTER LINE
- COR CORNER
- CTR CENTER
- DNR DEPARTMENT OF NATURAL RESOURCES
- F.S. FOREST SERVICE
- GLO GENERAL LAND OFFICE
- G.N. GENERAL NOTE
- LS LICENSED SURVEYOR
- LCR LAND CORNER RECORD
- MC MEANDER CORNER
- MOS MOUND OF STONE
- NTS NOT TO SCALE
- P.I. POINT OF INTERSECTION
- P.A.R. ... PERMANENT ACCESS ROAD EASEMENT
- P.T.E. ... POWER TRANSMISSION EASEMENT
- R/W RIGHT OF WAY
- RT RIGHT
- S.F. SQUARE FEET
- SR STATE ROUTE
- SEC SECTION
- T.C.A. ... TEMPORARY CONSTRUCTION ACCESS EASEMENT
- US UNITED STATES
- USDI ... UNITED STATES DEPT. OF INTERIOR
- USDA ... UNITED STATES DEPT. OF AGRICULTURE
- WC WITNESS CORNER
- W.M. WILLAMETTE MERIDIAN
- [+/-] ... DISTANCE OF MONUMENT ABOVE OR BELOW GROUND

SYMBOLS:

- (12.34 CH)RECORD DATA FROM GLO PLAT IN CHAINS
- ⊙MONUMENT FOUND AS NOTED
- ⊙STONE MONUMENT FOUND AS NOTED
- ⊙CALCULATED POSITION, NOT SET OR FOUND
- ⊙SECTION CORNER
- ⊙SECTION CORNER
- ⊙POWER POLE STRUCTURE LOCATION
- ⊙POWER POLE STRUCTURE LOCATION

LEGEND:

- CENTERLINE PROPOSED POWER TRANSMISSION EASEMENT
- EDGE OF PROPOSED POWER TRANSMISSION EASEMENT
- EXISTING PERMANENT ACCESS ROADS (APPROXIMATE LOCATION)
- PROPOSED TEMPORARY CONSTRUCTION ACCESS ROADS (APPROXIMATE LOCATION)



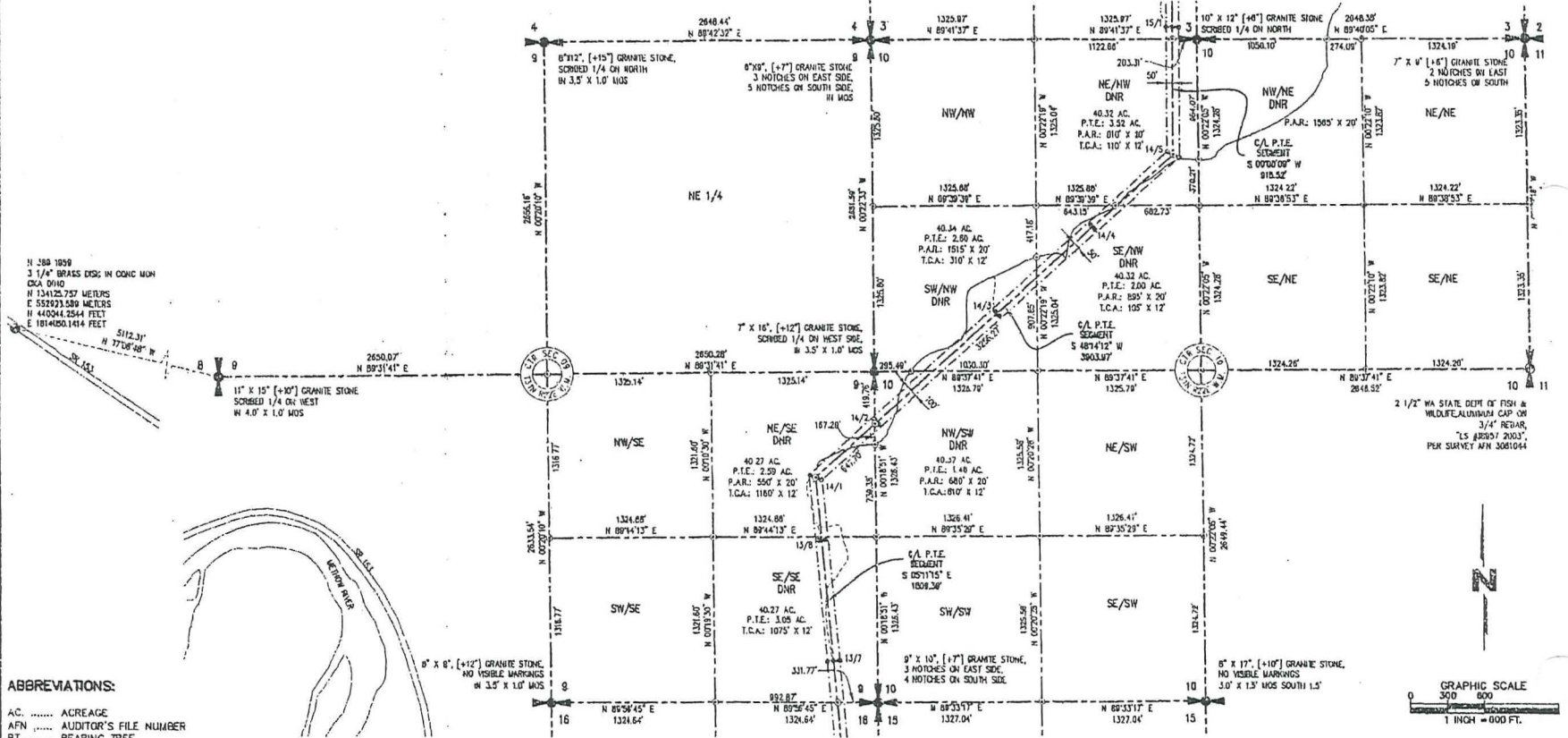
DRS D.R. STRONG
 CONSULTING ENGINEERS
 ENGINEERS PLANNERS SURVEYORS

10604 NE 38th PLACE, SUITE 101
 KIRKLAND, WA 98033
 425.027.3063 OFFICE
 800.982.1402 TOLL FREE
 425.827.2423 FAX
 www.drsstrong.com

SEC. 03, T. 31 N., R. 22 E., W.M.

METHOW 115KV TRANSMISSION LINE
 P.U.D. NO. 1 OF OKANOGAN COUNTY
 OKANOGAN COUNTY, WASHINGTON

SEE SHEET 7



ABBREVIATIONS:

- AC ACREAGE
- AFN AUDITOR'S FILE NUMBER
- BT BEARING TREE
- BLM BUREAU OF LAND MANAGEMENT
- CALC CALCULATED
- C/L CENTER LINE
- COR CORNER
- CTR CENTER
- DNR DEPARTMENT OF NATURAL RESOURCES
- F.S FOREST SERVICE
- GLO GENERAL LAND OFFICE
- G.M GENERAL NOTE
- LS LICENSED SURVEYOR
- LCR LAND CORNER RECORD
- MC MEANDER CORNER
- MOS MOUND OF STONE
- NTS NOT TO SCALE
- P.I POINT OF INTERSECTION
- P.A.R PERMANENT ACCESS ROAD EASEMENT
- P.T.E POWER TRANSMISSION EASEMENT
- R/W RIGHT OF WAY
- RT RIGHT
- S.F SQUARE FEET
- SR STATE ROUTE
- SEC SECTION
- T.C.A TEMPORARY CONSTRUCTION ACCESS EASEMENT
- US UNITED STATES
- USDI UNITED STATES DEPT. OF INTERIOR
- USDA UNITED STATES DEPT. OF AGRICULTURE
- WC WITNESS CORNER
- W.M WILLAMETTE MERIDIAN
- [+/-] DISTANCE OF MONUMENT ABOVE OR BELOW GROUND

SYMBOLS:

- (12.34 CH) RECORD DATA FROM GLO PLAT IN CHAINS
- MONUMENT FOUND AS NOTED
- STONE MONUMENT FOUND AS NOTED
- CALCULATED POSITION, NOT SET OR FOUND
- SECTION
- SECTION CORNER
- POWER POLE STRUCTURE LOCATION
- POWER POLE STRUCTURE LOCATION

SEE SHEET 9

LEGEND:

- CENTERLINE PROPOSED POWER TRANSMISSION EASEMENT
- EDGE OF PROPOSED POWER TRANSMISSION EASEMENT
- EXISTING PERMANENT ACCESS ROADS (APPROXIMATE LOCATION)
- PROPOSED TEMPORARY CONSTRUCTION ACCESS ROADS (APPROXIMATE LOCATION)

SHEET 8 OF 13

VOL./PAGE

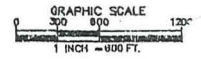
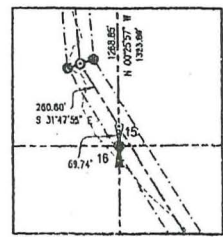
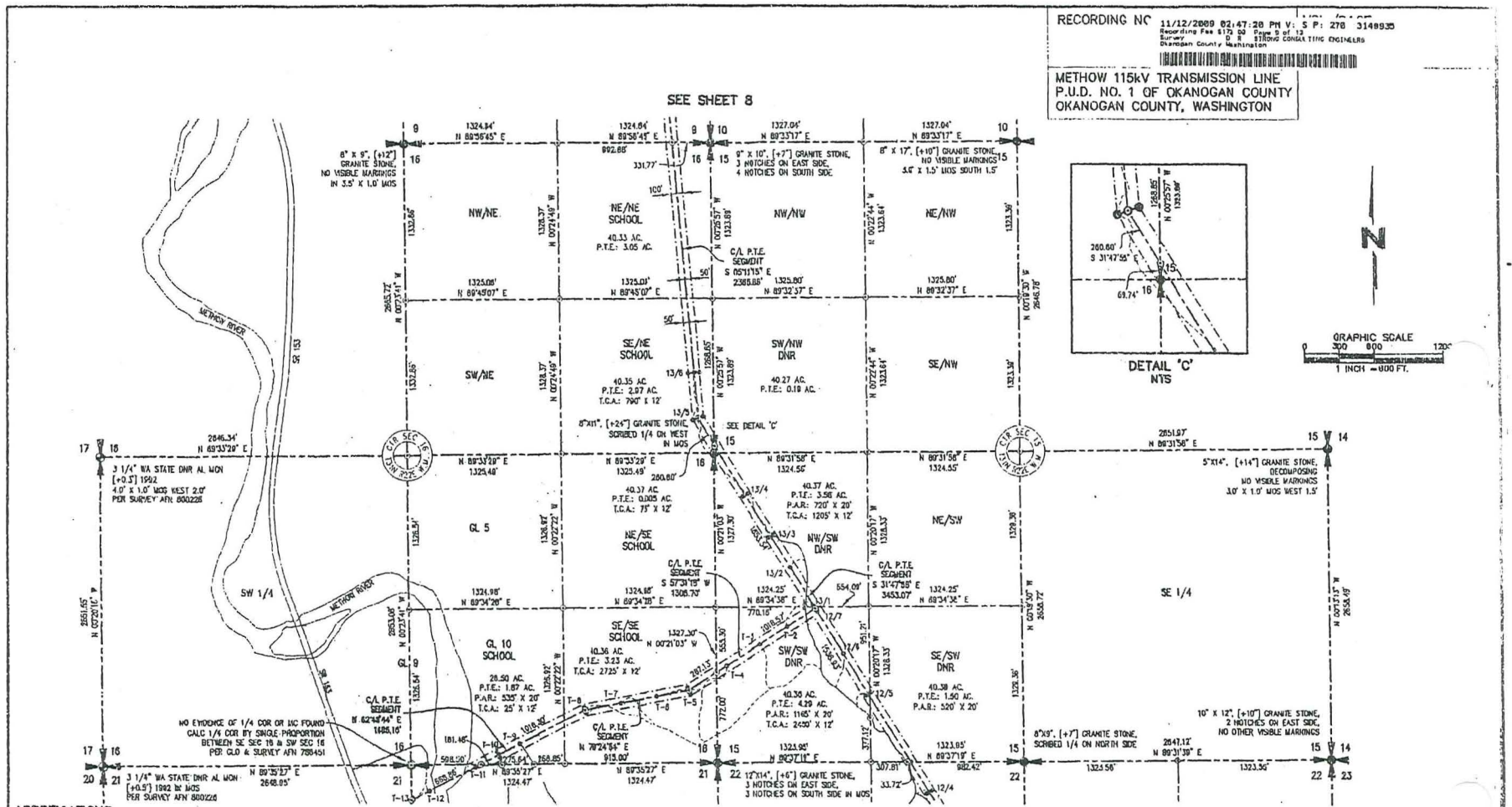


DRS D.R. STRONG
 CONSULTING ENGINEERS
 ENGINEERS PLANNERS SURVEYORS

10804 NE 30th PLACE, SUITE 107
 KIRKLAND, WA 98033
 425.827.3003 OFFICE
 800.962.1402 TOLL FREE
 425.827.2423 FAX
 www.drstrong.com

SEC. 09 & 10, T. 31 N., R. 22 E., W.M.
 DATE 09/10/09 SCALE 1"=600' DRAWN E.S./RLB JOB NO. 08124

METHOD 115kV TRANSMISSION LINE
 P.U.D. NO. 1 OF OKANOGAN COUNTY
 OKANOGAN COUNTY, WASHINGTON



ABBREVIATIONS:

- AC ACREAGE
- AFN AUDITOR'S FILE NUMBER
- BT BEARING TREE
- BLM BUREAU OF LAND MANAGEMENT
- CALC CALCULATED
- C/A CENTER LINE
- COR CORNER
- CTR CENTER
- DNR DEPARTMENT OF NATURAL RESOURCES
- F.S. FOREST SERVICE
- GLO GENERAL LAND OFFICE
- G.N. GENERAL NOTE
- LS LICENSED SURVEYOR
- LCR LAND CORNER RECORD
- MC MEANDER CORNER
- MOS MOUND OF STONE
- N7S NOT TO SCALE
- P.I. POINT OF INTERSECTION
- P.A.R. PERMANENT ACCESS ROAD EASEMENT
- P.T.E. POWER TRANSMISSION EASEMENT
- R/W RIGHT OF WAY
- RT RIGHT
- S.F. SQUARE FEET
- SR STATE ROUTE
- SEC SECTION
- T.C.A. TEMPORARY CONSTRUCTION ACCESS EASEMENT
- US UNITED STATES
- USOI UNITED STATES DEPT. OF INTERIOR
- USDA UNITED STATES DEPT. OF AGRICULTURE
- WC WITNESS CORNER
- W.M. WILLAMETTE MERIDIAN
- [+/-] DISTANCE OF MONUMENT ABOVE OR BELOW GROUND

SYMBOLS:

- (12.34 CH) RECORD DATA FROM GLO PLAT IN CHAINS
- ⊙ MONUMENT FOUND AS NOTED
- ⊙ STONE MONUMENT FOUND AS NOTED
- ⊙ CALCULATED POSITION, NOT SET OR FOUND
- ⊙ X SECTION
- ⊙ SECTION CORNER
- ⊙ POWER POLE STRUCTURE LOCATION
- ⊙ POWER POLE STRUCTURE LOCATION

LEGEND:

- CENTERLINE PROPOSED POWER TRANSMISSION EASEMENT
- EDGE OF PROPOSED POWER TRANSMISSION EASEMENT
- EXISTING PERMANENT ACCESS ROADS (APPROXIMATE LOCATION)
- PROPOSED TEMPORARY CONSTRUCTION ACCESS ROADS (APPROXIMATE LOCATION)

SEE SHEET 10

SEE SHEET 8



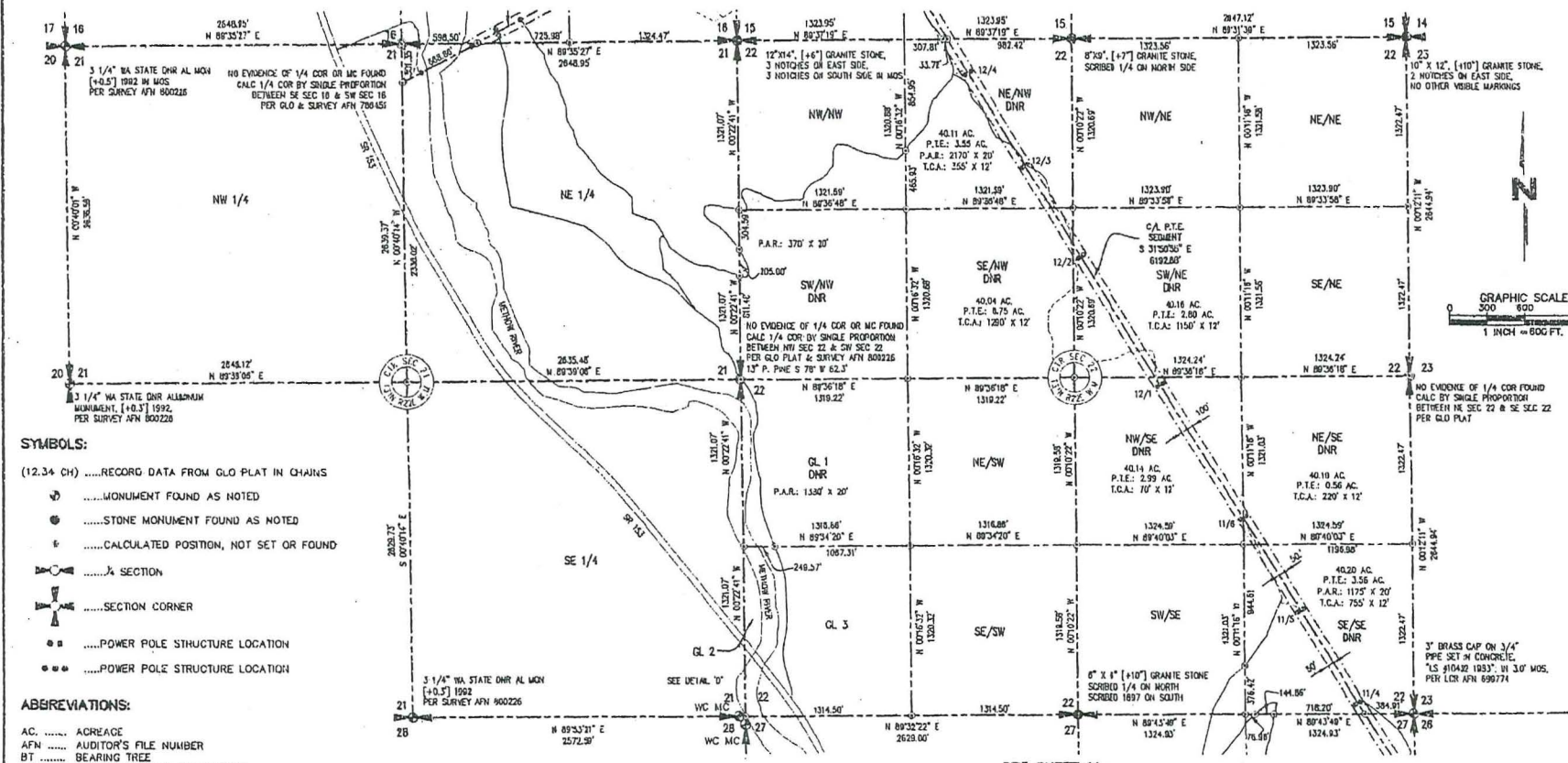
DRS D.R. STRONG
 CONSULTING ENGINEERS
 ENGINEERS PLANNERS SURVEYORS

10804 NE 38th PLACE, SUITE 101
 KIRKLAND, WA 98033
 425.827.3063 OFFICE
 800.852.1407 TOLL FREE
 425.027.2423 FAX
 www.dnstrong.com

SEC. 15 & 16, T. 31 N., R. 22 E., W.M.
 DATE 09/10/09 SCALE 1"=600' DRAWN EJS/RLB JOB NO. 03124

METHOW 115kV TRANSMISSION LINE
 P.U.D. NO. 1 OF OKANOGAN COUNTY
 OKANOGAN COUNTY, WASHINGTON

SEE SHEET 9



SYMBOLS:

- (12.34 CH)RECORD DATA FROM GLO PLAT IN CHAINS
- ⊙MONUMENT FOUND AS NOTED
-STONE MONUMENT FOUND AS NOTED
- ⊕CALCULATED POSITION, NOT SET OR FOUND
- ⊕SECTION
- ⊕SECTION CORNER
- ⊙POWER POLE STRUCTURE LOCATION
- ⊙POWER POLE STRUCTURE LOCATION

ABBREVIATIONS:

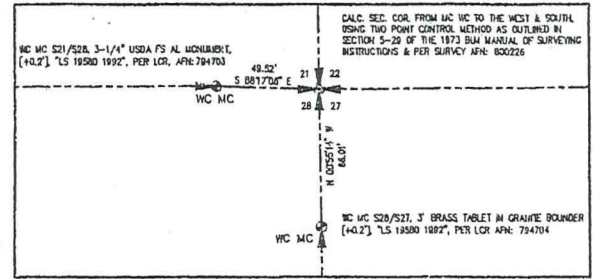
- AC ACREAGE
- AFN AUDITOR'S FILE NUMBER
- BT BEARING TREE
- BLM BUREAU OF LAND MANAGEMENT
- CALC CALCULATED
- C/L CENTER LINE
- COR CORNER
- CNT CENTER
- DNR DEPARTMENT OF NATURAL RESOURCES
- F.S. FOREST SERVICE
- GLO GENERAL LAND OFFICE
- G.N. GENERAL NOTE
- LS LICENSED SURVEYOR
- LCR LAND CORNER RECORD
- MC MEANDER CORNER
- MOS MOUND OF STONE
- NTS NOT TO SCALE
- P.I. POINT OF INTERSECTION
- P.A.R. PERMANENT ACCESS ROAD EASEMENT
- P.T.E. POWER TRANSMISSION EASEMENT
- R/W RIGHT OF WAY
- RT RIGHT
- S.F. SQUARE FEET
- SR STATE ROUTE
- SEC SECTION
- T.C.A. TEMPORARY CONSTRUCTION ACCESS EASEMENT
- US UNITED STATES
- USDI UNITED STATES DEPT. OF INTERIOR
- USDA UNITED STATES DEPT. OF AGRICULTURE
- W.M. WILLAMETTE MERIDIAN
- WC WITNESS CORNER
- W.M. WILLAMETTE MERIDIAN
- [+/-] DISTANCE OF MONUMENT ABOVE OR BELOW GROUND



SEE SHEET 11

LEGEND:

- CENTERLINE PROPOSED POWER TRANSMISSION EASEMENT
- EDGE OF PROPOSED POWER TRANSMISSION EASEMENT
- EXISTING PERMANENT ACCESS ROADS (APPROXIMATE LOCATION)
- PROPOSED TEMPORARY CONSTRUCTION ACCESS ROADS (APPROXIMATE LOCATION)



DETAIL 'D'
 NTS

SHEET 10 OF 13



DRS D.R. STRONG
 CONSULTING ENGINEERS
 ENGINEERS PLANNERS SURVEYORS

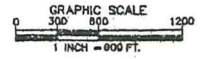
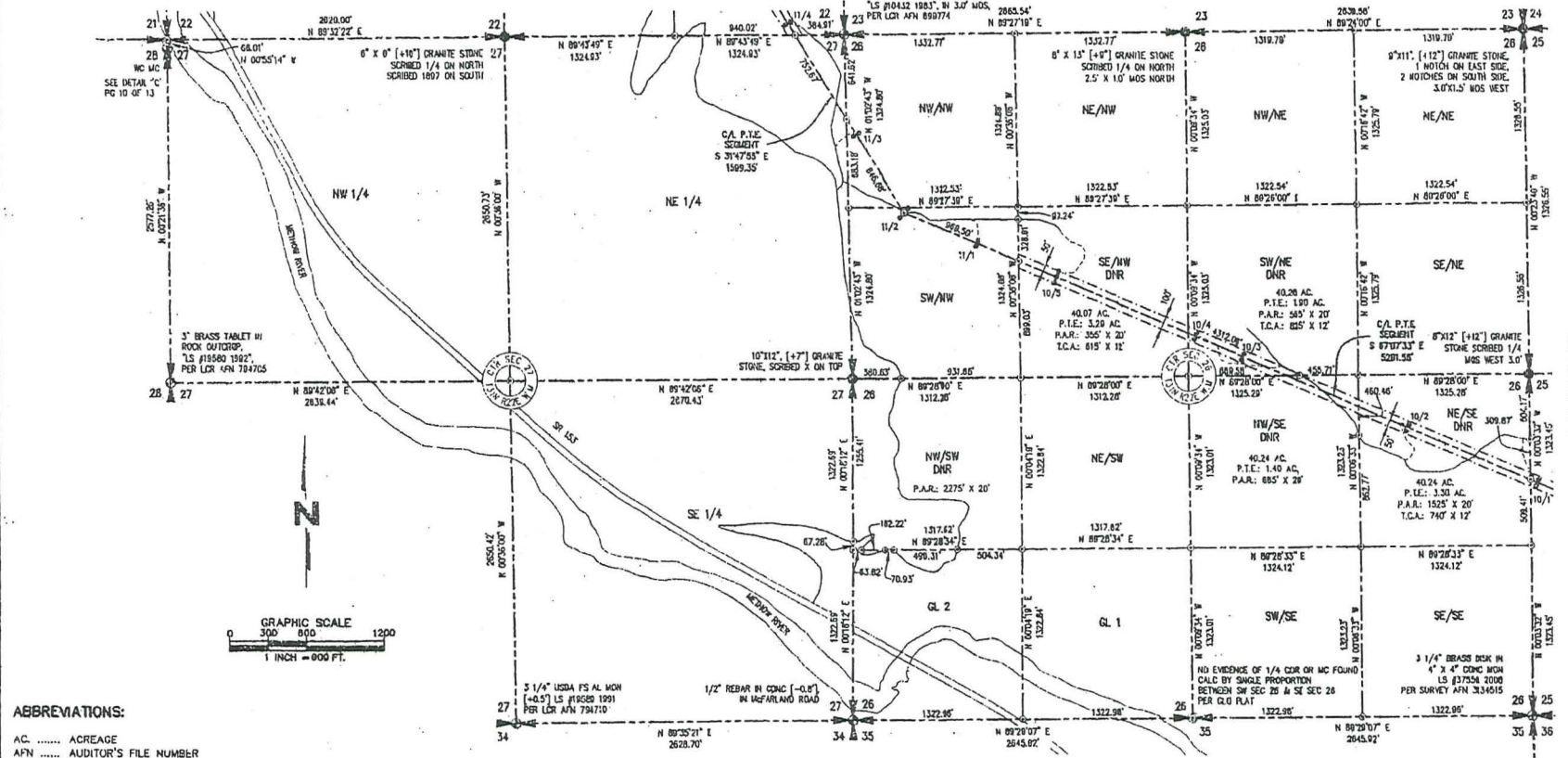
10604 NE 38th PLACE, SUITE 101
 KIRKLAND, WA 98033
 425.827.3063 OFFICE
 800.862.1402 TOLL FREE
 425.827.2423 FAX
 www.drstrong.com

SEC. 21 & 22, T. 31 N., R. 22 E., W.M.
 DATE 08/10/09 SCALE 1"=800' DRAWN EJS/RLG JOB NO. 08124

VOL./PAGE:

METHOW 115kV TRANSMISSION LINE
 P.U.D. NO. 1 OF OKANOGAN COUNTY
 OKANOGAN COUNTY, WASHINGTON

SEE SHEET 10



ABBREVIATIONS:

- AC ACREAGE
- APN AUDITOR'S FILE NUMBER
- BT BEARING TREE
- BLM BUREAU OF LAND MANAGEMENT
- CALC CALCULATED
- C/L CENTER LINE
- CCR CORNER
- CTR CENTER
- DNR DEPARTMENT OF NATURAL RESOURCES
- F.S. FOREST SERVICE
- GLO GENERAL LAND OFFICE
- G.M. GENERAL NOTE
- LS LICENSED SURVEYOR
- LCR LAND CORNER RECORD
- MC MEANDER CORNER
- MOS MOUND OF STONE
- NTS NOT TO SCALE
- P.I. POINT OF INTERSECTION
- P.A.R. ... PERMANENT ACCESS ROAD EASEMENT
- P.T.E. ... POWER TRANSMISSION EASEMENT
- R/W RIGHT OF WAY
- RT RIGHT
- S.F. SQUARE FEET
- SR STATE ROUTE
- SEC SECTION
- T.C.A. ... TEMPORARY CONSTRUCTION ACCESS EASEMENT
- US UNITED STATES
- USDI ... UNITED STATES DEPT. OF INTERIOR
- USDA .. UNITED STATES DEPT. OF AGRICULTURE
- WC WITNESS CORNER
- W.M. WILLAMETTE MERIDIAN
- [+/-]... DISTANCE OF MONUMENT ABOVE OR BELOW GROUND

SYMBOLS:

- (12.34 CH)RECORD DATA FROM GLO PLAT IN CHAINS
- ⊙MONUMENT FOUND AS NOTED
- ⊕STONE MONUMENT FOUND AS NOTED
- ⊖CALCULATED POSITION, NOT SET OR FOUND
- ⊗X SECTION
- ⊕SECTION CORNER
- ⊙POWER POLE STRUCTURE LOCATION
- ⊕POWER POLE STRUCTURE LOCATION

LEGEND:

- CENTERLINE PROPOSED POWER TRANSMISSION EASEMENT
- EDGE OF PROPOSED POWER TRANSMISSION EASEMENT
- EXISTING PERMANENT ACCESS ROADS (APPROXIMATE LOCATION)
- PROPOSED TEMPORARY CONSTRUCTION ACCESS ROADS (APPROXIMATE LOCATION)

SHEET 11 OF 13



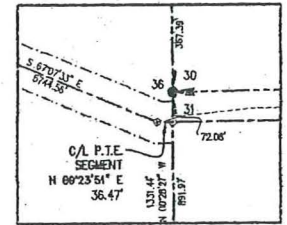
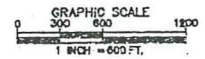
DRS D.R. STRONG
 CONSULTING ENGINEERS
 ENGINEERS PLANNERS SURVEYORS

10604 NE 38th PLACE, SUITE 101
 KIRKLAND, WA 98033
 425.827.3083 OFFICE
 800.982.1402 TOLL FREE
 425.827.2423 FAX
 www.drstrong.com

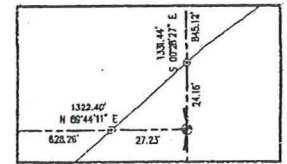
SEC. 26 & 27, T. 31 N., R. 22 E., W.M.
 DATE 09/10/09 SCALE 1"=600' DRAWN EJS/RLB JOB NO. 08124

VOL./PAGE

SEE SHEET 11



DETAIL 'E'
NTS



DETAIL 'F'
NTS

SYMBOLS:

- (12.34 CH) RECORD DATA FROM GLO PLAT IN CHAINS
- ⊙ MONUMENT FOUND AS NOTED
- ⊙ STONE MONUMENT FOUND AS NOTED
- ⊙ CALCULATED POSITION, NOT SET OR FOUND
- ⊙ SECTION
- ⊙ SECTION CORNER
- ⊙ POWER POLE STRUCTURE LOCATION
- ⊙ POWER POLE STRUCTURE LOCATION

ABBREVIATIONS:

- AC ACREAGE
- AFN AUDITOR'S FILE NUMBER
- BT BEARING TREE
- BLM BUREAU OF LAND MANAGEMENT
- CALC CALCULATED
- C/L CENTER LINE
- CDR CENTER
- DNR DEPARTMENT OF NATURAL RESOURCES
- F.S. FOREST SERVICE
- GLO GENERAL LAND OFFICE
- G.N. GENERAL NOTE
- LS LICENSED SURVEYOR
- LCR LAND CORNER RECORD
- MC MEANDER CORNER
- MOS MOUND OF STONE
- RTS NOT TO SCALE
- P.I. POINT OF INTERSECTION
- P.A.R. PERMANENT ACCESS ROAD EASEMENT
- P.T.E. POWER TRANSMISSION EASEMENT
- R/W RIGHT OF WAY
- RT RIGHT
- S.F. SQUARE FEET
- SR STATE ROUTE
- SEC SECTION
- T.C.A. TEMPORARY CONSTRUCTION ACCESS EASEMENT
- US UNITED STATES
- USDI UNITED STATES DEPT. OF INTERIOR
- USDA UNITED STATES DEPT. OF AGRICULTURE
- WC WITNESS CORNER
- W.M. WILLAMETTE MERIDIAN
- (+/-) DISTANCE OF MONUMENT ABOVE OR BELOW GROUND

LEGEND:

- CENTERLINE PROPOSED POWER TRANSMISSION EASEMENT
- EDGE OF PROPOSED POWER TRANSMISSION EASEMENT
- EXISTING PERMANENT ACCESS ROADS (APPROXIMATE LOCATION)
- PROPOSED TEMPORARY CONSTRUCTION ACCESS ROADS (APPROXIMATE LOCATION)

MICHAELS 1990
 3 1/4" USDA FS AL MON
 LCR 0145
 74 18133.239 METERS
 E 526260.514 METERS
 N 414481.7830 FEET
 E 183490.5362 FEET

SEC. 25 & 36, T. 31 N., R. 22 E., W.M.

DATE: 09/10/08

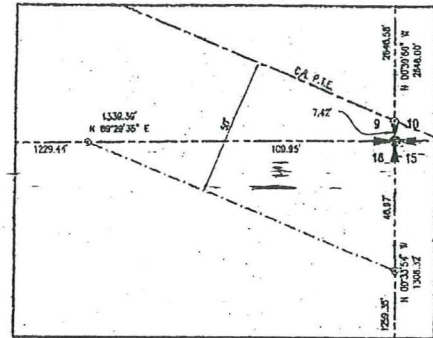
SCALE: 1"=600'

DRAWN: EJS/RLB

JOB NO. 06124



DRS D.R. STRONG CONSULTING ENGINEERS
 ENGINEERS PLANNERS SURVEYORS
 10504 NE 38th PLACE, SUITE 101 425.827.3063 OFFICE
 KIRKLAND, WA 98033 800.952.1402 TOLL FREE
 www.drststrong.com 425.827.2423 FAX



SYMBOLS:

- (12.34 CH) RECORD DATA FROM GLO PLAT IN CHAINS
- MONUMENT FOUND AS NOTED
- STONE MONUMENT FOUND AS NOTED
- ⊙ CALCULATED POSITION, NOT SET OR FOUND
- ⊗ X SECTION
- ⊕ SECTION CORNER
- POWER POLE STRUCTURE LOCATION
- POWER POLE STRUCTURE LOCATION

ABBREVIATIONS:

- AC ACREAGE
- AFN AUDITOR'S FILE NUMBER
- BT BEARING TREE
- BLM BUREAU OF LAND MANAGEMENT
- CALC CALCULATED
- C/L CENTER LINE
- COR CORNER
- CTR CENTER
- DNR DEPARTMENT OF NATURAL RESOURCES
- F.S. FOREST SERVICE
- GLO GENERAL LAND OFFICE
- G.N. GENERAL NOTE
- LS LICENSED SURVEYOR
- LCR LAND CORNER RECORD
- MC MEANDER CORNER
- MOS MOUND OF STONE
- NTS NOT TO SCALE
- P.I. POINT OF INTERSECTION
- P.A.R. PERMANENT ACCESS ROAD EASEMENT
- P.T.E. POWER TRANSMISSION EASEMENT
- R/W RIGHT OF WAY
- RT RIGHT
- S.F. SQUARE FEET
- SR STATE ROUTE
- SEC SECTION
- T.O.A. TEMPORARY CONSTRUCTION ACCESS EASEMENT
- US UNITED STATES
- USDI UNITED STATES DEPT. OF INTERIOR
- USDA UNITED STATES DEPT. OF AGRICULTURE
- WC WITNESS CORNER
- W.M. WILLAMETTE MERIDIAN
- [+/-] DISTANCE OF MONUMENT ABOVE OR BELOW GROUND

LEGEND:

- CENTERLINE PROPOSED POWER TRANSMISSION EASEMENT
- EDGE OF PROPOSED POWER TRANSMISSION EASEMENT
- EXISTING PERMANENT ACCESS ROADS (APPROXIMATE LOCATION)
- PROPOSED TEMPORARY CONSTRUCTION ACCESS ROADS (APPROXIMATE LOCATION)

DATE: 09/10/09 SCALE: 1"=600' DRAWN: EJS/RLB JOB NO. 08124



DRS D.R. STRONG CONSULTING ENGINEERS

ENGINEERS PLANNERS SURVEYORS
 10604 NE 38th PLACE, SUITE 101 425.827.3083 OFFICE
 KIRKLAND, WA 98033 800.962.1402 TOLL FREE
 www.drsstrong.com 425.827.2423 FAX

SEC. 09 & 16, T. 30 N., R. 23 E., W.M.