

STRUCTURAL STEEL BILL OF MATERIAL

MARK	QTY	DESCRIPTION	LENGTH		WEIGHT		REMARKS
			FEET	INCHES	EACH	EXT	
A11	2	ASSEMBLY	-	-	657.2	1314.4	
T12	2	HSS 8 X 8 X 1/4	1	10	47.3	94.6	
T13	2	HSS 8 X 8 X 1/4	8	2	210.9	421.8	
P911	2	PL 3/4 X 14	1	2	41.7	83.4	
P123	6	PL 1/4 X 8	1	4	9.1	54.6	
E2	4	3/4 X 9 GA X 8"	0	8	0.7	2.8	
A22	2	ASSEMBLY	-	-	125.2	250.4	
T19	1	HSS 6 X 6 X 1/4	6	7	125.2	125.2	
T20	1	HSS 4 X 4 X 3/16	1	3	11.7	11.7	
P536	2	PL 3/4 X 14	1	2	41.7	83.4	
C511	1	CS 8 X 10.5	4	0	42.0	42.0	
A51	24	ASSEMBLY	-	-	4.0	96.0	
P956	1	PL 1/4 X 7	0	8	4.0	4.0	(BENT)
TOTAL WEIGHT THIS SHEET (NOT INCLUDING FINISH):					1660.8		POUNDS

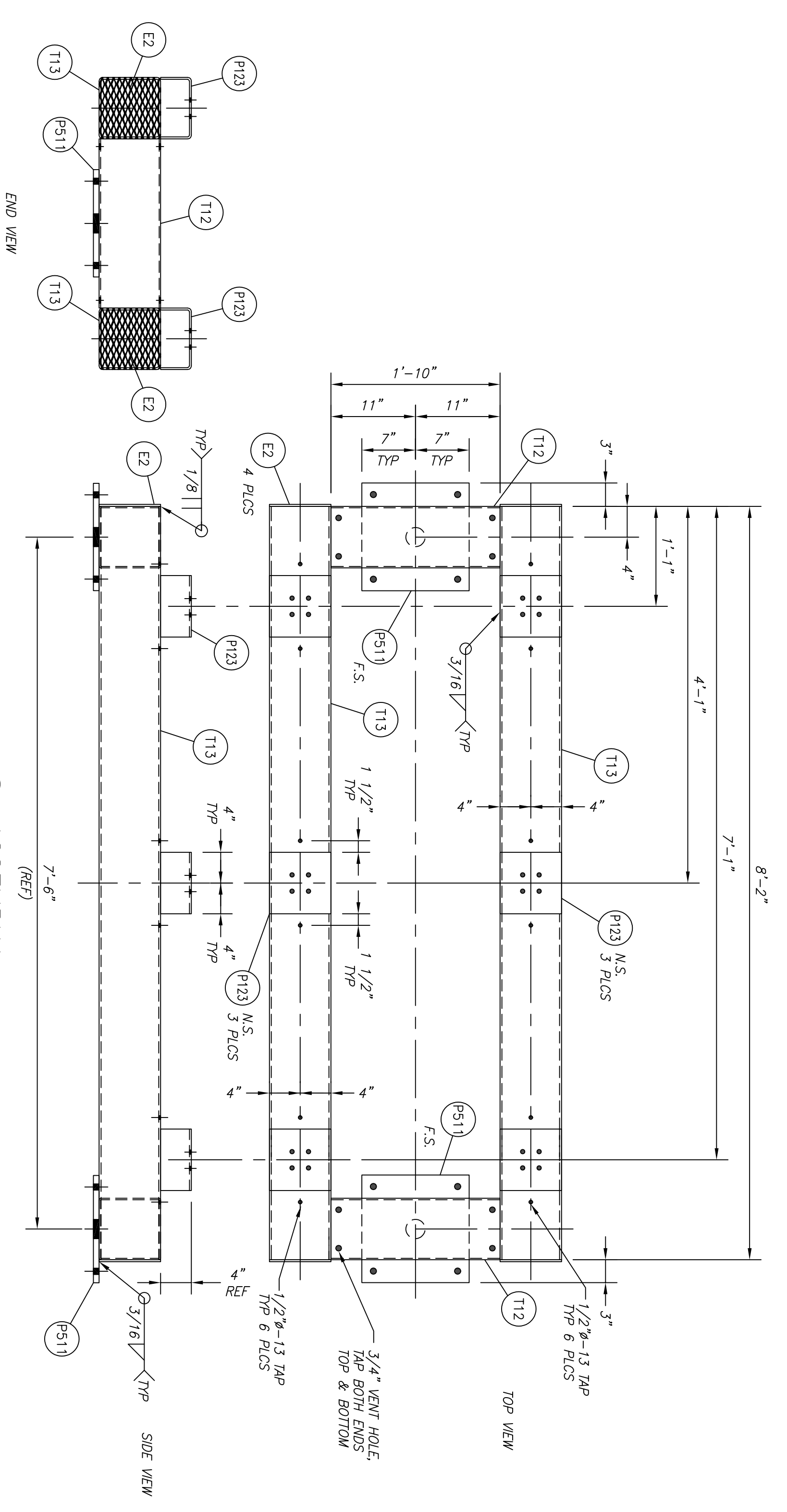
ERECTION BOLTS			
40	EACH	3/4"	DIA 2 3/4"
30	EACH	1/2"	DIA 1"
	EACH		LONG A325 BOLTS WITH HEAVY HEX NUT AND HARDENED WASHER
	EACH		LONG A325 BOLTS WITH HEAVY HEX NUT AND HARDENED WASHER
	EACH		LONG A307 BOLTS WITH HEAVY HEX NUT AND HARDENED WASHER

MARK	MATERIAL	FINISH
	HSS SHAPES:	HOT DIP GALVANIZED
	ALL OTHER STEEL:	

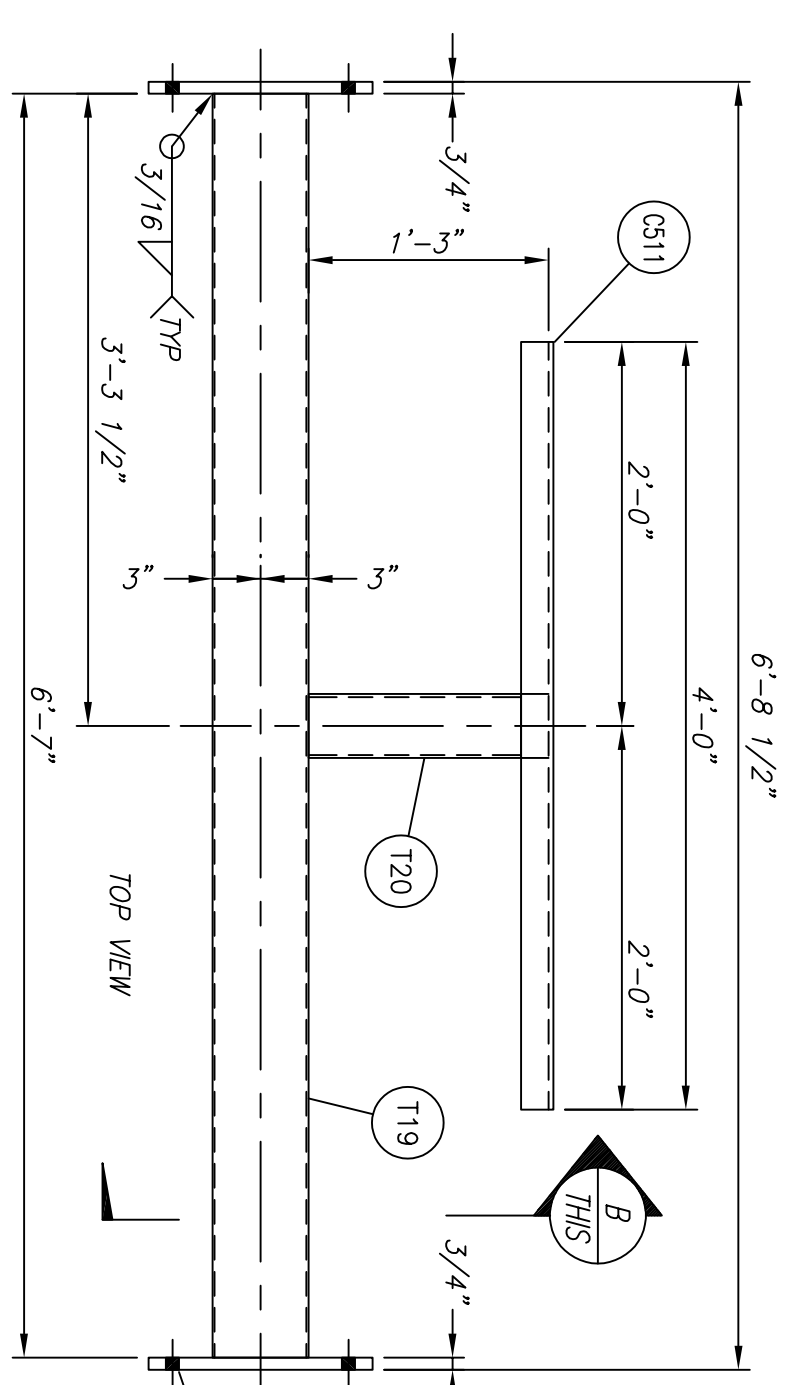
ALL BOLTS AND HARDWARE SHALL BE GALVANIZED

MARK EACH STRUCTURE WITH ASSEMBLY NUMBER, MARK COLUMNS APPROXIMATELY 2'-0" ABOVE BASEPLATE, MARK BEAMS APPROXIMATELY 2'-0" FROM ONE END, AS PER SPECIFICATION.

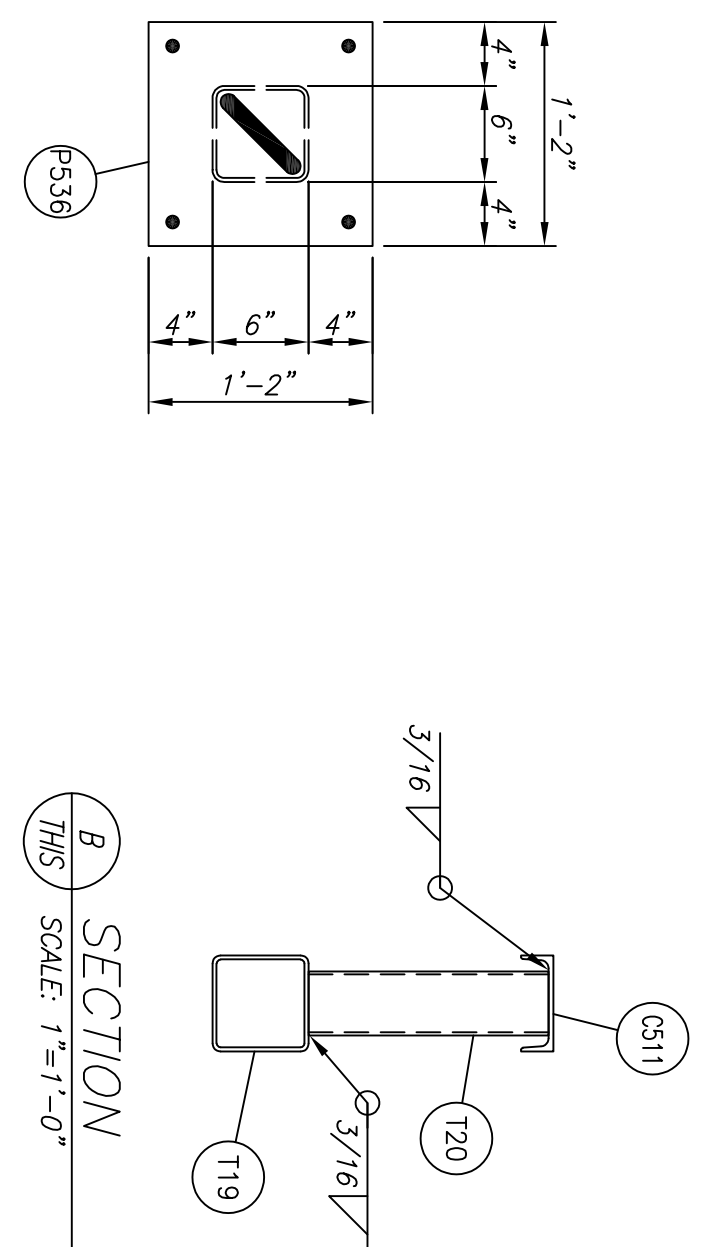
- NOTES
1. WELDING ELECTRODES SHALL BE E70XX.
 2. * VERIFY DIMENSION WITH ENGINEER BEFORE FABRICATION.
 3. ALL FLAT PLATES SHALL BE PROCESSED USING COMPUTERIZED MACHINES FOR ACCURACY IN CUTTING BOLT HOLE PATTERNS & SLOTS.
 4. CONSTRUCTION CONTRACTOR SHALL FIELD DRILL HOLES FOR U-BOLT TO SECURE CONDUIT TO STRUCTURE.



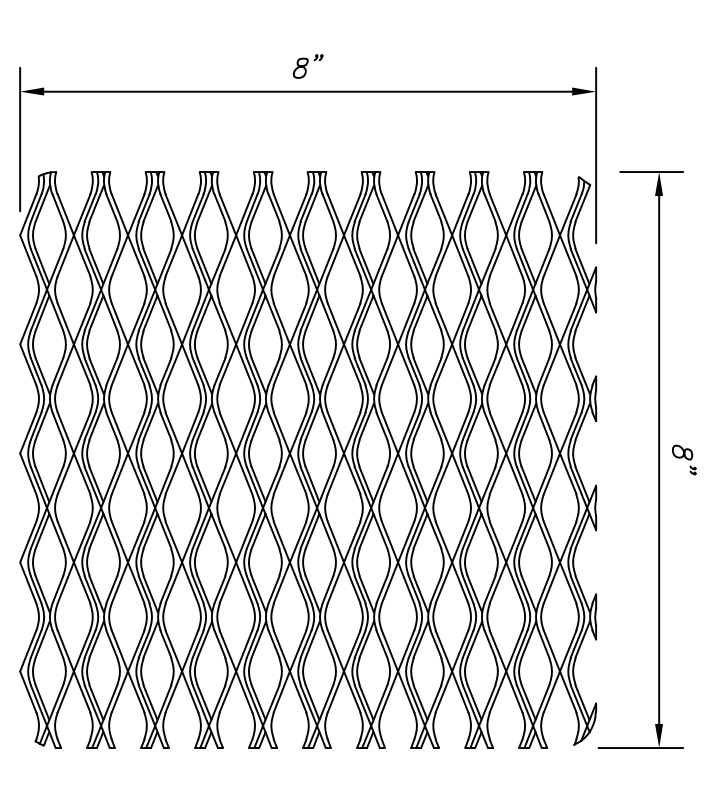
A11 ASSEMBLY
15KV TRANSFORMER RISER
SCALE: 1"=1'-0"



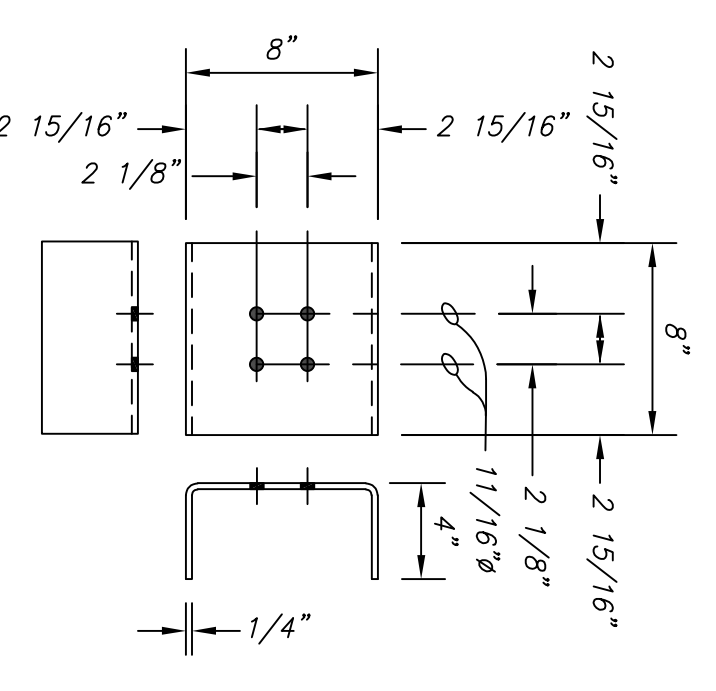
A22 ASSEMBLY
15KV TRANSFORMER RISER
SCALE: 1"=1'-0"



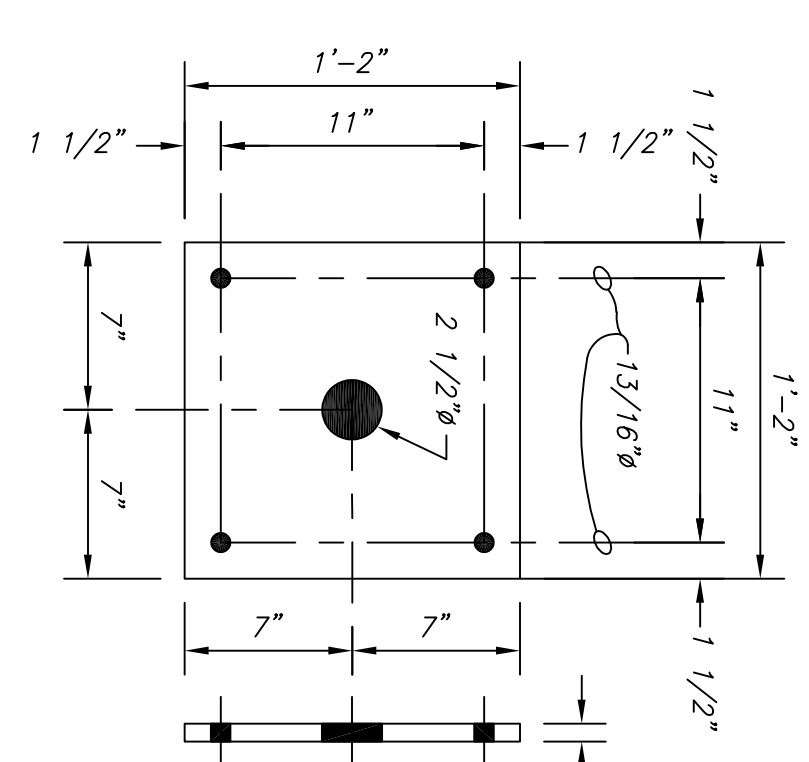
B SECTION
THIS SECTION
SCALE: 1"=1'-0"



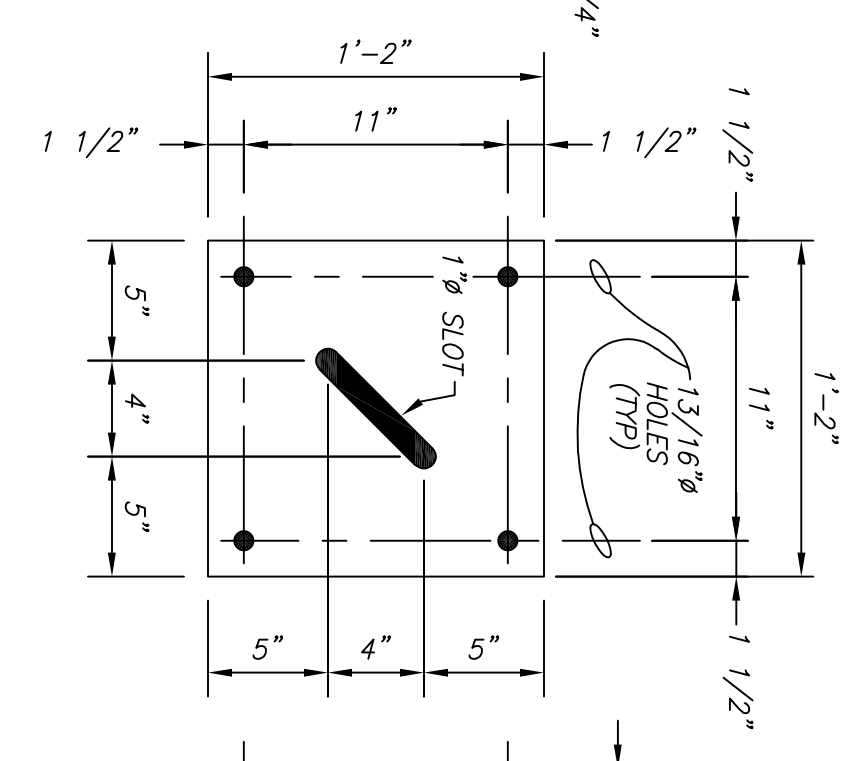
E2 DETAIL
3/4" X 9 GA X 8" EXP. METAL
SCALE: 3/8"=1"



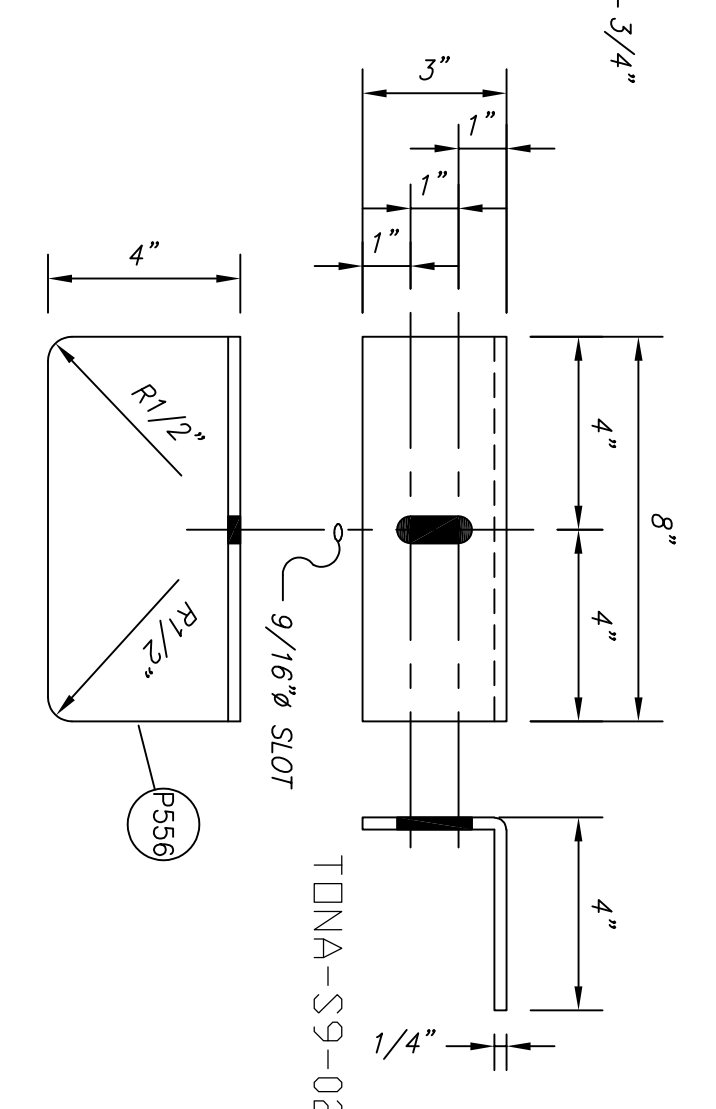
P123 DETAIL
PL 1/4 X 8 X 1'-4" (BENT)
WEIGHT: 0.4 #
SCALE: 1/8"=1"



P511 DETAIL
PL 5/16 X 14 X 1'-2"
WEIGHT: 4.17 #
SCALE: 1/8"=1"



P536 DETAIL
PL 3/4 X 14 X 1'-2"
WEIGHT: 4.17 #
SCALE: 1/8"=1"



A51 ASSEMBLY
BAR GUARD
3/4" X 7" X 0'-8"
WEIGHT: 4.0 #
SCALE: 1/4"=1"

FILE NAME:		Project:	
15KV TRANSFORMER RISER.DWG		TONASKET SUBSTATION	
REV. DATE		Drawing:	
A	10/16/19	115/13.8KV SUBSTATION	
0	10/31/19	15KV TRANSFORMER RISER	
DESIGNED	ENGINEER	DRAWN	SHEET
KMS	AMN	KLD	2 OF 2
SCALE	W.D. No.	DATE	DWG #
AS SHOWN	XXXXXX	10/16/19	TDNA-S9-02

OKANOGAN COUNTY PUD No. 1