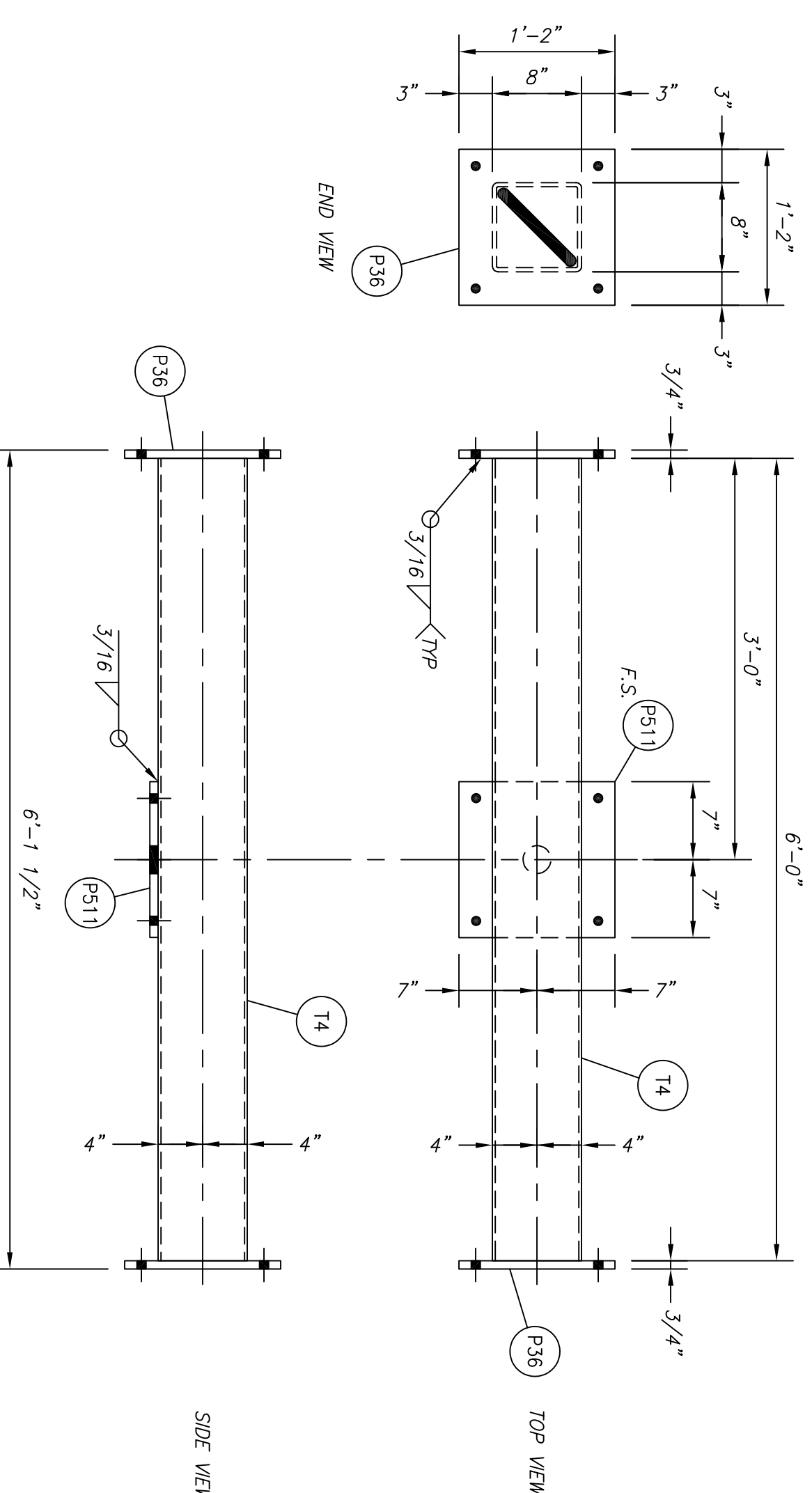


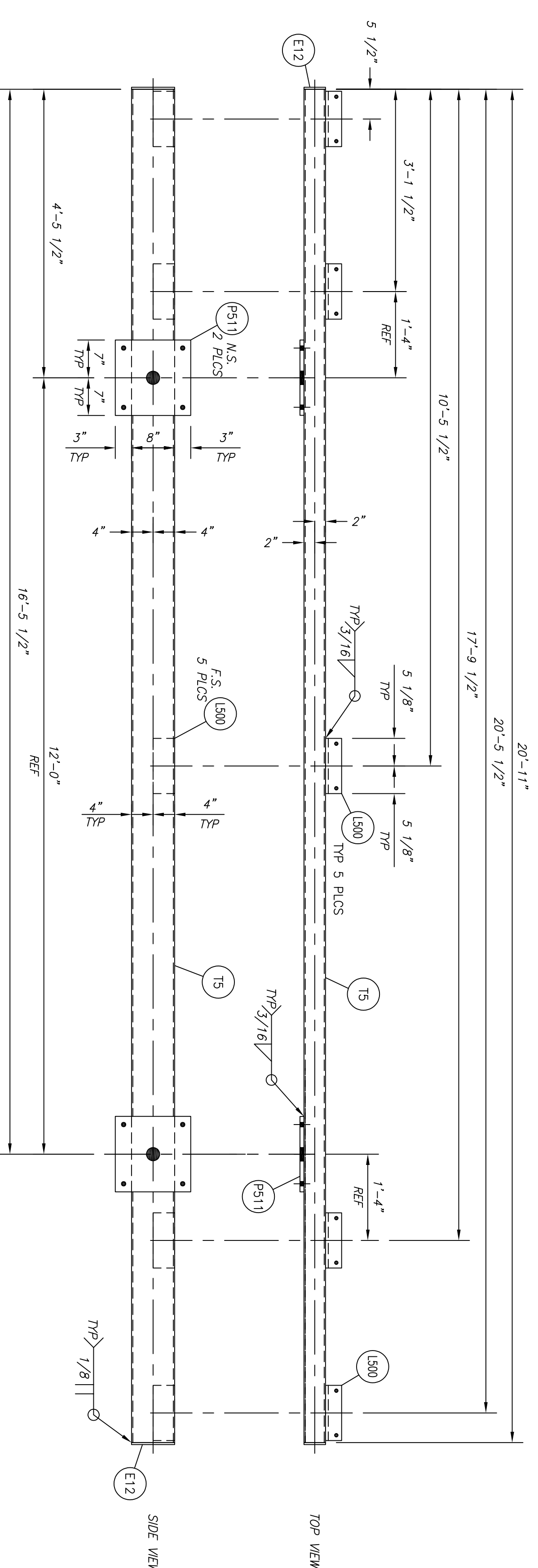
STRUCTURAL STEEL BILL OF MATERIAL

MARK	QTY	DESCRIPTION	LENGTH		WEIGHT		REMARKS
			FEET	INCHES	EACH	EXT	
A20	2	ASSEMBLY	-	-	280.0	560.0	
T4	1	HSS 8 X 8 X 1/4	6	0	154.9	154.9	
P36	2	PL 3/4 X 14	1	2	41.7	83.4	
P511	1	PL 3/4 X 14	1	2	41.7	41.7	
A21	2	ASSEMBLY	-	-	529.5	1059.0	
T5	1	HSS 8 X 4 X 1/4	20	11	397.8	397.8	
P511	2	PL 3/4 X 14	1	2	41.7	83.4	
L500	5	L 4 X 3 X 1/2	0	10	1/4	9.5	47.5
E12	2	3/4 X 9 GA X 4"	0	8	0.4	0.8	

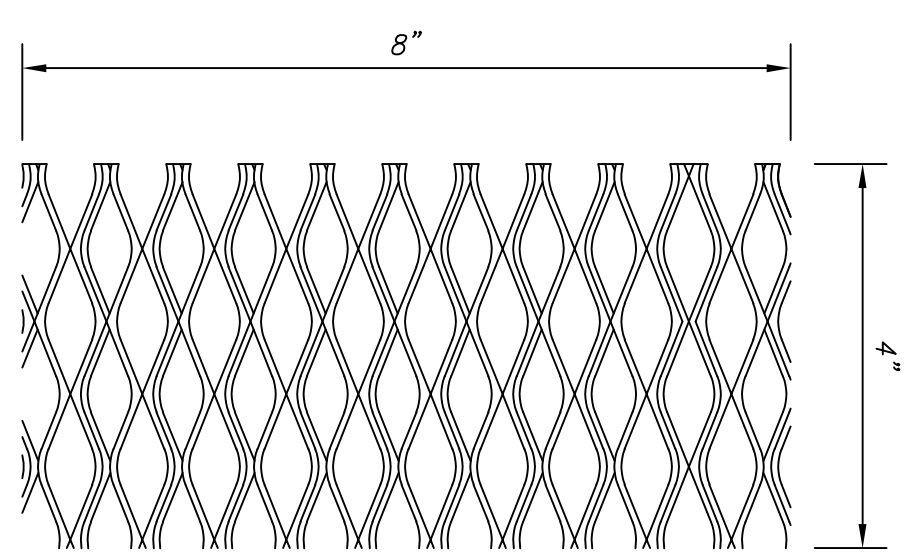
TOTAL WEIGHT THIS SHEET (NOT INCLUDING FINISH): 1819.0 POUNDS



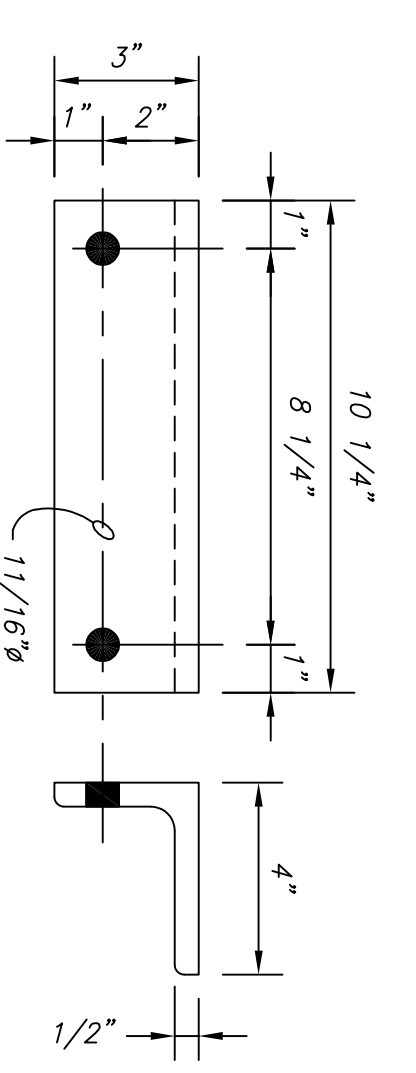
A20 115KV HIGH SWITCH STAND  
SCALE: 1"=1'-0"



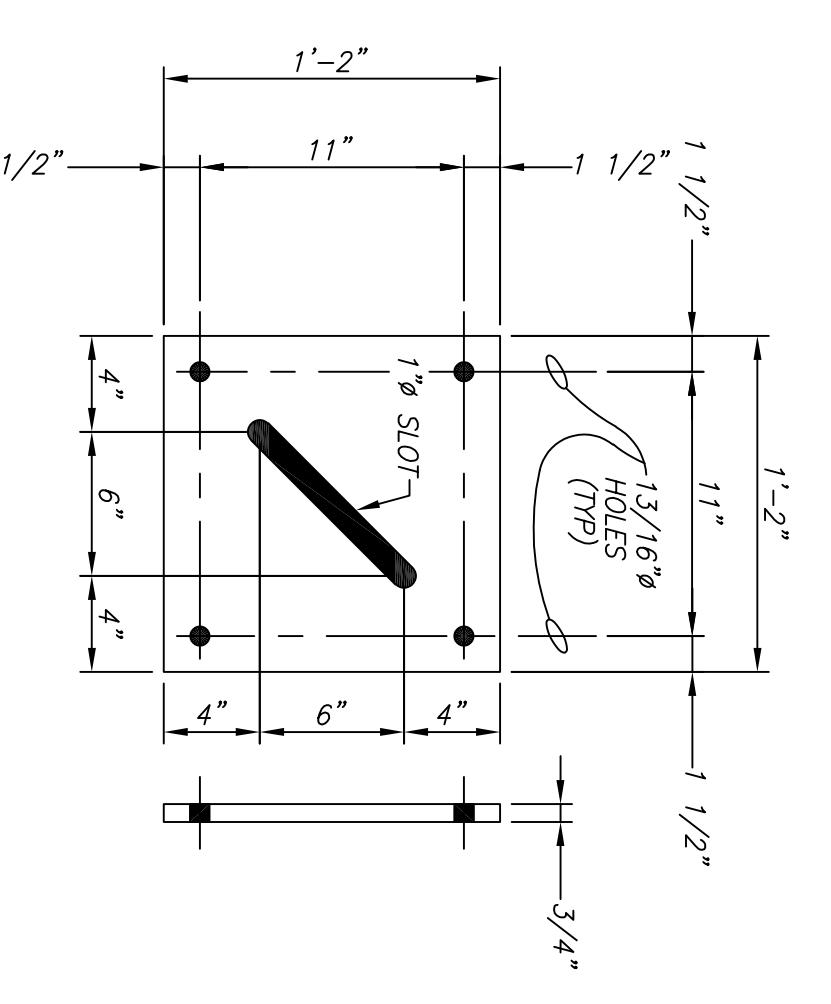
A21 115KV HIGH SWITCH STAND  
SCALE: 3/4"=1'-0"



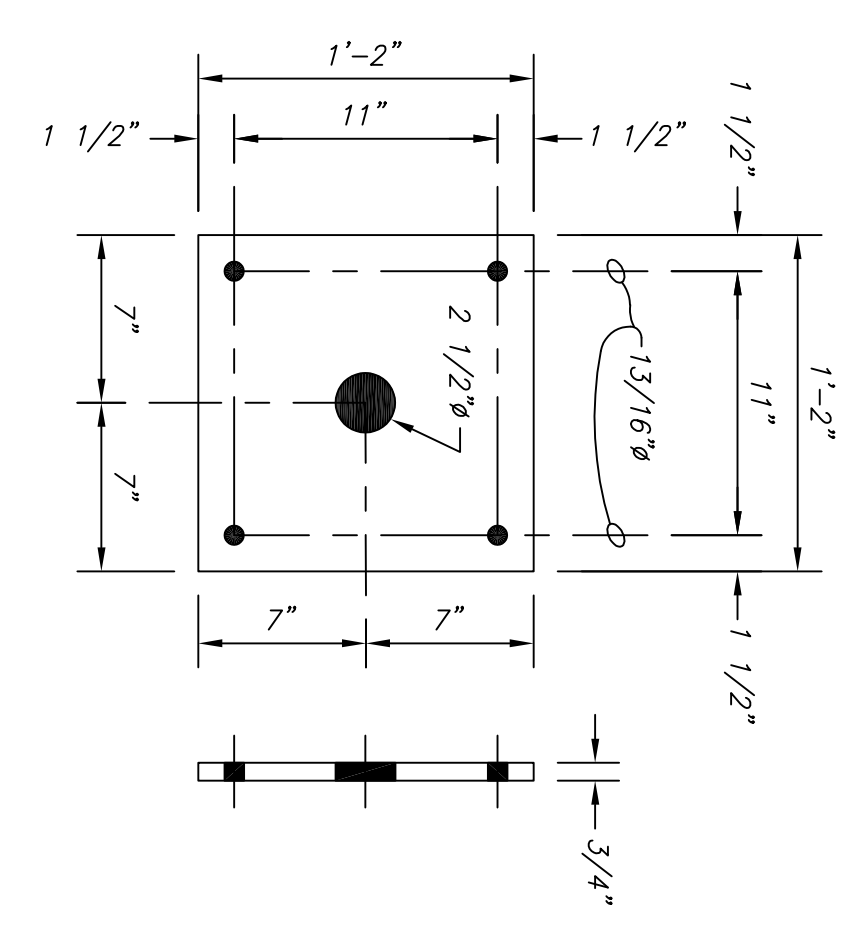
E12 3/4" X 9 GA X 4" EXP. METAL  
WEIGHT: 0.5 #  
SCALE: 1/2"=1"



L500 4" X 3" X 1/2" X 0'-10 1/4"  
WEIGHT: 9.5 #  
SCALE: 1/4"=1"



P36 PL 3/4 X 14 X 1'-2"  
WEIGHT: 41.7 #  
SCALE: 1/8"=1"



P511 PL 3/4 X 14 X 1'-2"  
WEIGHT: 41.7 #  
SCALE: 1/8"=1"

- NOTES
1. WELDING ELECTRODES SHALL BE EXXX.
  2. \*\* VERIFY DIMENSION WITH ENGINEER BEFORE FABRICATION.
  3. ALL FLAT PLATES SHALL BE PROCESSED USING COMPUTERIZED MACHINES FOR ACCURACY IN CUTTING BOLT HOLE PATTERNS & SLOTS.

MARK	QTY	DESCRIPTION	LENGTH	WEIGHT	REMARKS
ERECTOR BOLTS	30	3/4" DIA 2 3/4"			
	EACH	DIA	LONG A325 BOLTS WITH HEAVY HEX NUT AND HARDENED WASHER.		
	EACH	DIA	LONG A325 BOLTS WITH HEAVY HEX NUT AND HARDENED WASHER.		
	EACH	DIA	LONG A325 BOLTS WITH HEAVY HEX NUT AND HARDENED WASHER.		
	EACH	DIA	LONG A307 BOLTS WITH HEAVY HEX NUT AND HARDENED WASHER.		

Project: TONASKET SUBSTATION  
Drawing: HIGH DWG

OKANOGAN COUNTY PUD NO. 1

REV.	DATE	DESCRIPTION	DESIGNED	ENGINEER	DRAWN	SHEET
A	10/16/19	115/13.8KV SUBSTATION				2 OF 2
0	10/31/19	115KV SWITCH - HIGH				DWG #

FILE NAME:	DATE	DESIGNED	ENGINEER	DRAWN	SHEET
TONA-S7-02 115KV SWITCH	10/16/19	115/13.8KV SUBSTATION			2 OF 2
Project: TONASKET SUBSTATION	10/31/19	115KV SWITCH - HIGH			DWG #
Scale: AS SHOWN	XXXXXX	10/16/19	TONA-S7-02		