

STRUCTURAL STEEL BILL OF MATERIAL

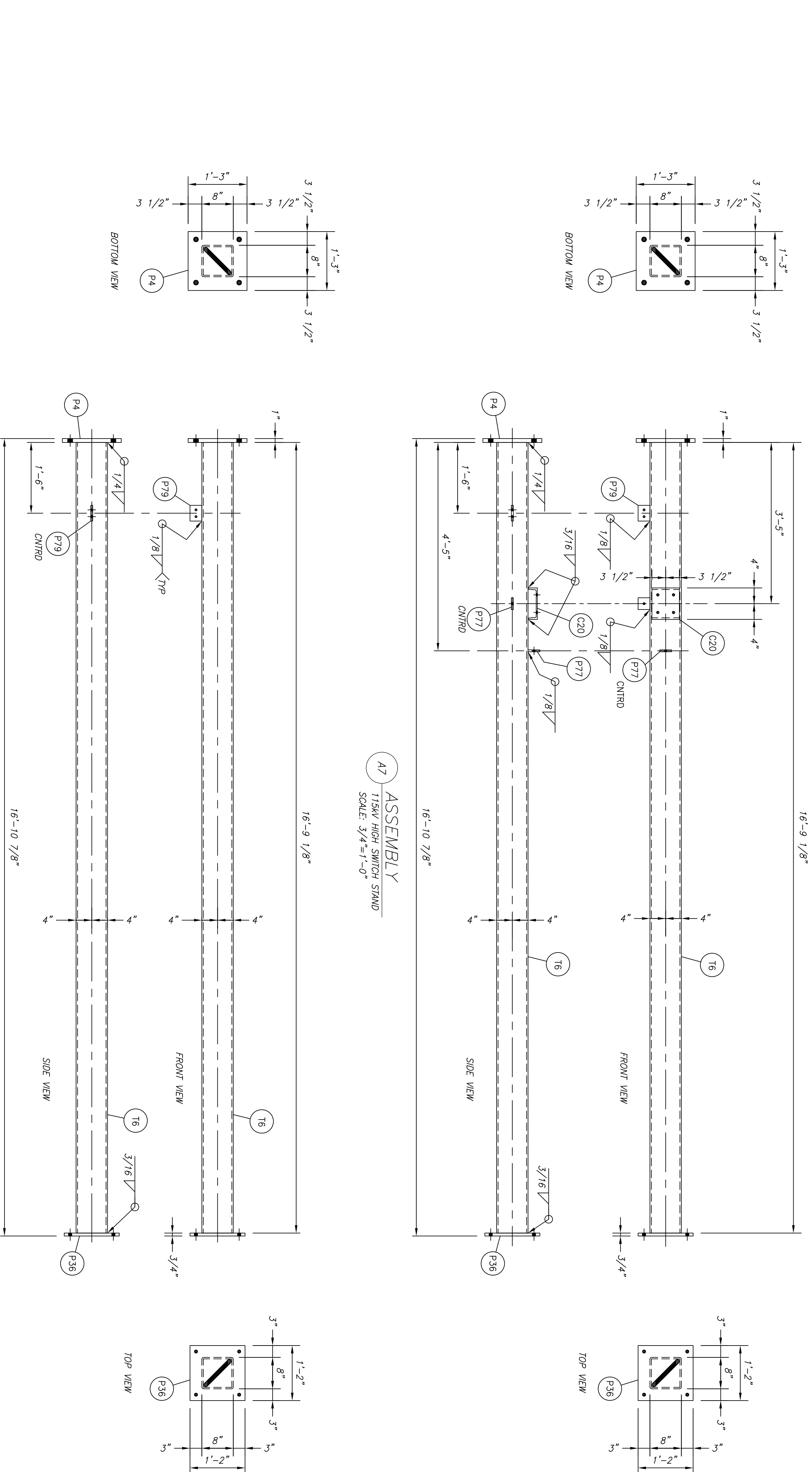
MARK	QTY	DESCRIPTION	LENGTH		WEIGHT		REMARKS
			FEET	INCHES	EACH	EXT	
A7	1	ASSEMBLY	-	-	550.6	550.6	
T6	1	HSS 8 X 8 X 1/4	16	9 1/8	432.8	432.8	
C20	1	CS X 13.75	0	7	8.0	8.0	
P4	1	PL 1 X 15	1	3	63.8	63.8	
P36	1	PL 3/4 X 14	1	2	41.7	41.7	
P77	2	PL 1/2 X 3	0	3	1.3	2.6	
P79	1	PL 1/2 X 3	0	4	1.7	1.7	
A8	1	ASSEMBLY	-	-	540.0	540.0	
T6	1	HSS 8 X 8 X 1/4	16	9 1/8	432.8	432.8	
P4	1	PL 1 X 15	1	3	63.8	63.8	
P36	1	PL 3/4 X 14	1	2	41.7	41.7	
P79	1	PL 1/2 X 3	0	4	1.7	1.7	

TOTAL WEIGHT THIS SHEET (NOT INCLUDING FINISH): 1090.6 POUNDS

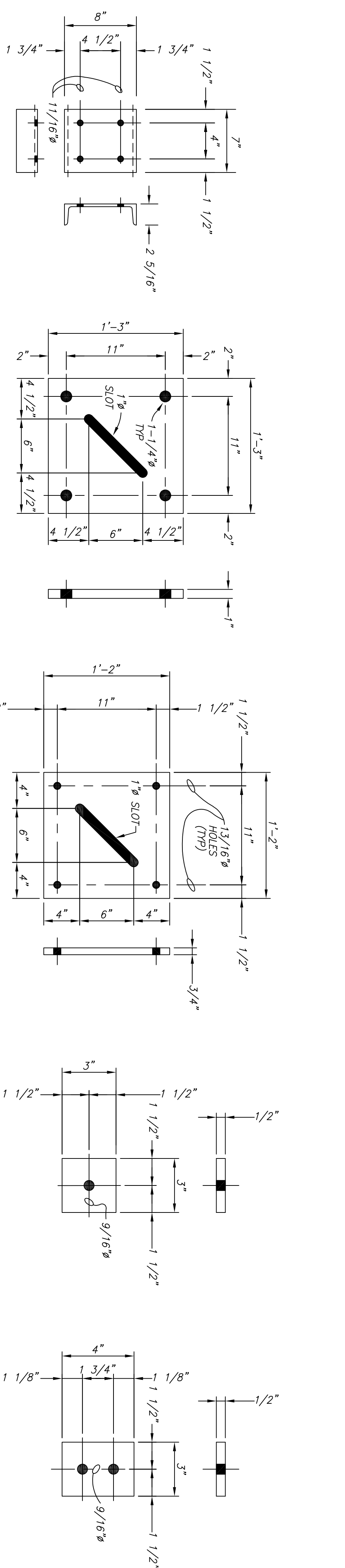
ERECTION BOLTS			
EACH	DIA	LONG A226 BOLTS WITH HEAVY HEX NUT AND HARDENED WASHER	
EACH	DIA	LONG A325 BOLTS WITH HEAVY HEX NUT AND HARDENED WASHER	
EACH	DIA	LONG A325 BOLTS WITH HEAVY HEX NUT AND HARDENED WASHER	
EACH	DIA	LONG A307 BOLTS WITH HEAVY HEX NUT AND HARDENED WASHER	

MARK		MATERIAL		FINISH	
MARK EACH STRUCTURE WITH ASSEMBLY NUMBER	HSS SWAGES:	ASTM A500, GRADE B		HOT DIP GALVANIZED	
PIPE	ALL OTHER STEEL:	ASTM A51, GRADE B			
2'-0" ABOVE BASEPLATE MARK BOLTS APPROXIMATELY 2'-0" FROM ONE END.		ASTM A58, UNLESS SPECIFIED OTHERWISE			
AS PER SPECIFICATION.					

- NOTES
1. WELDING ELECTRODES SHALL BE E70XX.
  2. \* VERIFY DIMENSION WITH ENGINEER BEFORE FABRICATION.
  3. ALL FLAT PLATES SHALL BE PROCESSED USING COMPUTERIZED MACHINES FOR ACCURACY IN CUTTING BOLT HOLE PATTERNS & SLOTS.



**A8** ASSEMBLY  
T15KV HIGH SWITCH STAND  
SCALE: 3/4"=1'-0"



**C20** DETAIL  
CS X 13.75 X 0'-7"  
WEIGHT: 8.0 #  
SCALE: 1/8"=1"

**P4** DETAIL  
PL 1 X 15 X 1'-3"  
WEIGHT: 63.8 #  
SCALE: 1/8"=1"

**P36** DETAIL  
PL 3/4 X 14 X 1'-2"  
WEIGHT: 41.7 #  
SCALE: 1/8"=1"

**P77** DETAIL  
PL 1/2 X 3 X 0'-3"  
WEIGHT: 1.3 #  
SCALE: 1/4"=1"

**P79** DETAIL  
PL 1/2 X 3 X 0'-4"  
WEIGHT: 1.7 #  
SCALE: 1/4"=1"

FILE NAME:		Project:	
TONA-S7-01 115KV SWITCH-HIGH.DWG		TONASKET SUBSTATION	
REV.:	DATE	Drawing:	
A	10/16/19	115/13.8KV SUBSTATION	
0	10/31/19	115KV SWITCH - HIGH	
DESIGNED	ENGINEER	DRAWN	SHEET
KMS	AMN	KLD	1 OF 2
SCALE	W.D. NO.	DATE	DWG #
AS SHOWN	XXXXXX	10/16/19	TONA-S7-01