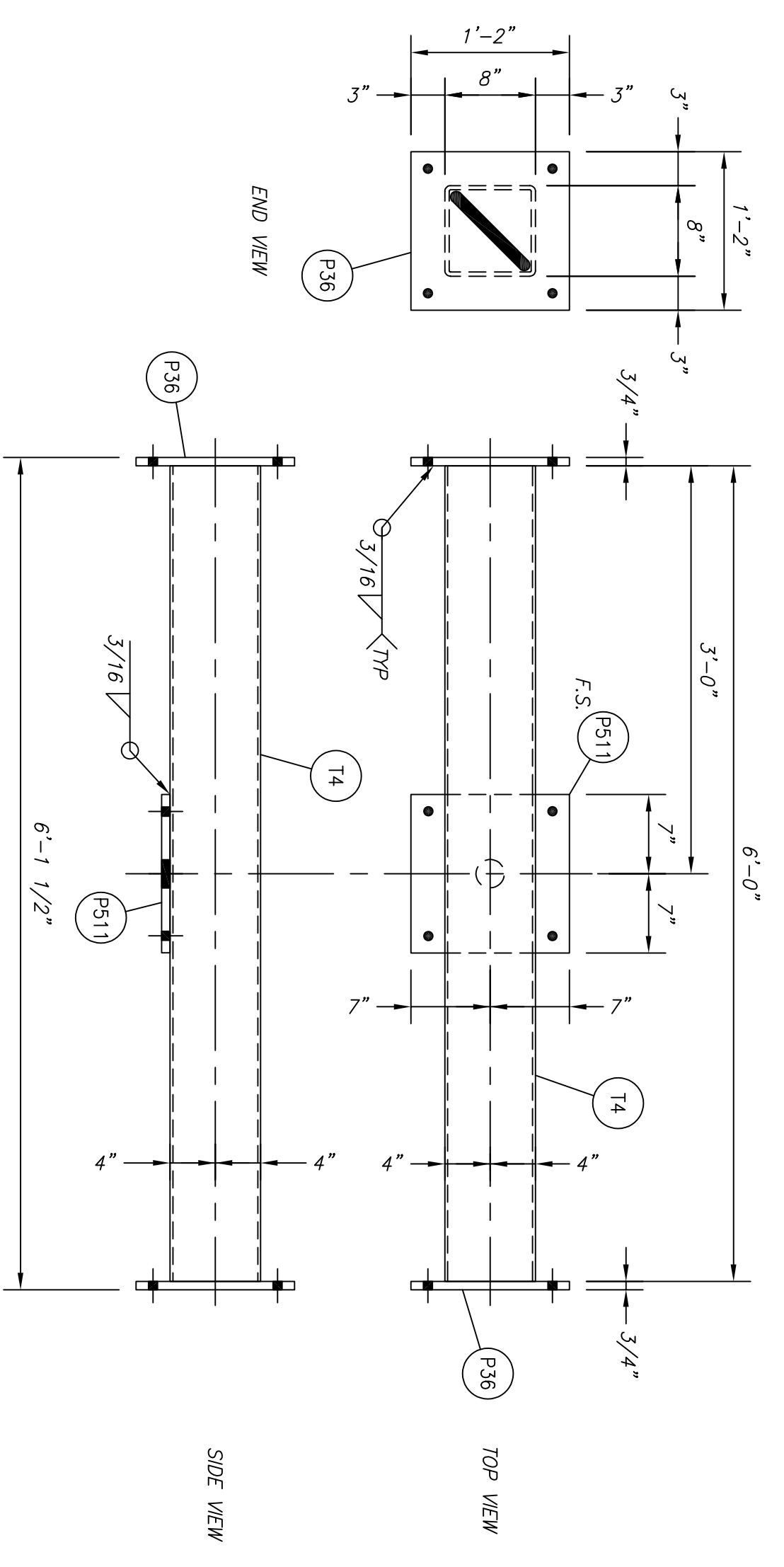
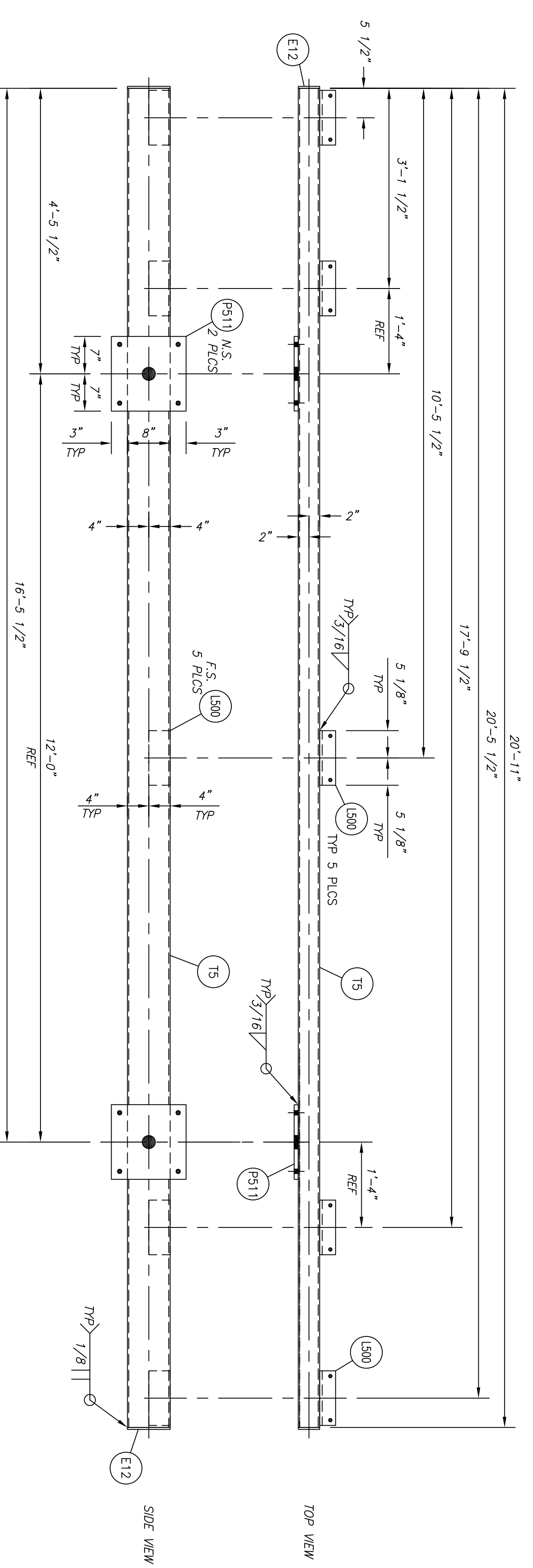


STRUCTURAL STEEL BILL OF MATERIAL

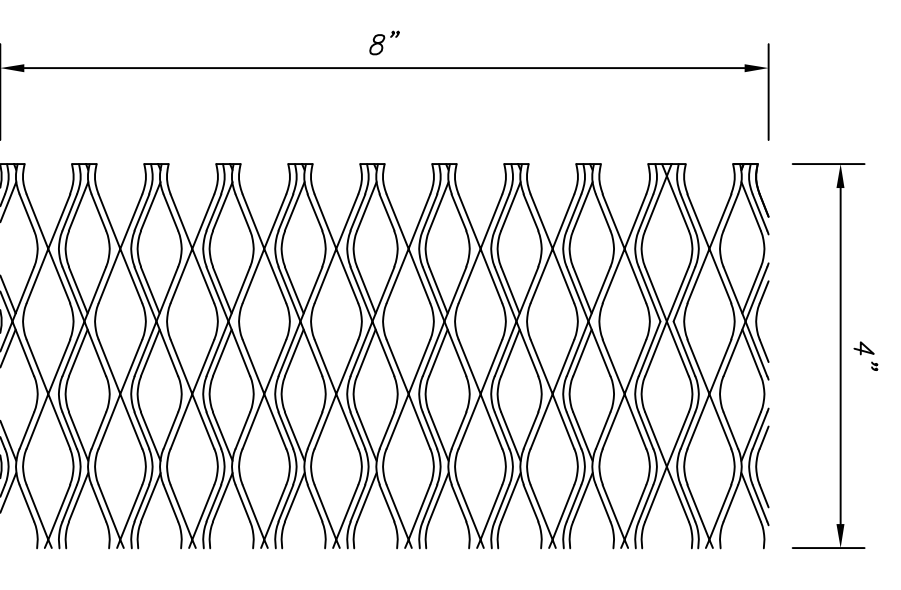
MARK	QTY	DESCRIPTION	LENGTH		WEIGHT		REMARKS
			FEET	INCHES	EACH	EXT	
A5	12	ASSEMBLY	-	-	280.0	3360.0	
T4	1	HSS 8 X 8 X 1/4	6	0	154.9	154.9	
P36	2	PL 3/4 X 14	1	2	41.7	83.4	
P511	1	PL 3/4 X 14	1	2	41.7	41.7	
A6	12	ASSEMBLY	-	-	529.5	6354.0	
T5	1	HSS 8 X 4 X 1/4	20	11	397.8	397.8	
P511	2	PL 3/4 X 14	1	2	41.7	83.4	
L500	5	L 4 X 3 X 1/2	0	10	1/4	9.5	47.5
E12	2	3/4 X 9 GA X 4"	0	8	0.4	0.8	
TOTAL WEIGHT THIS SHEET (NOT INCLUDING FINISH):					92714.0		POUNDS



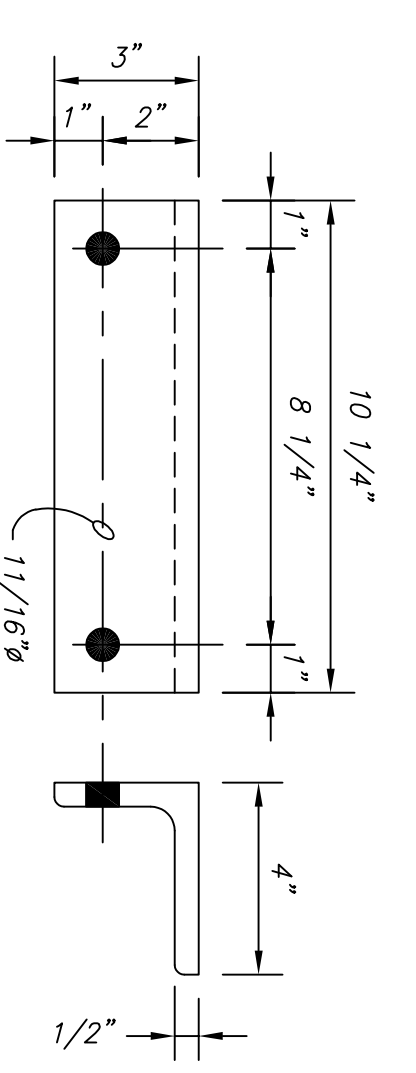
A5 ASSEMBLY
SCALE: 1"=1'-0"



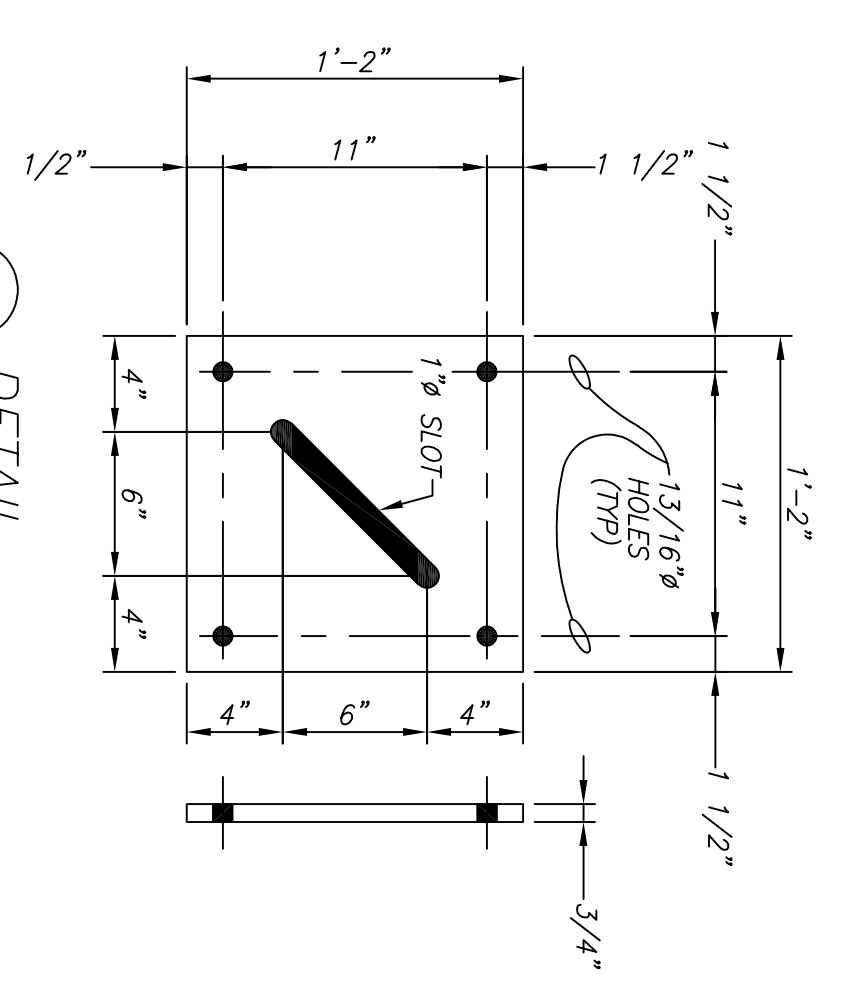
A6 ASSEMBLY
SCALE: 3/4"=1'-0"



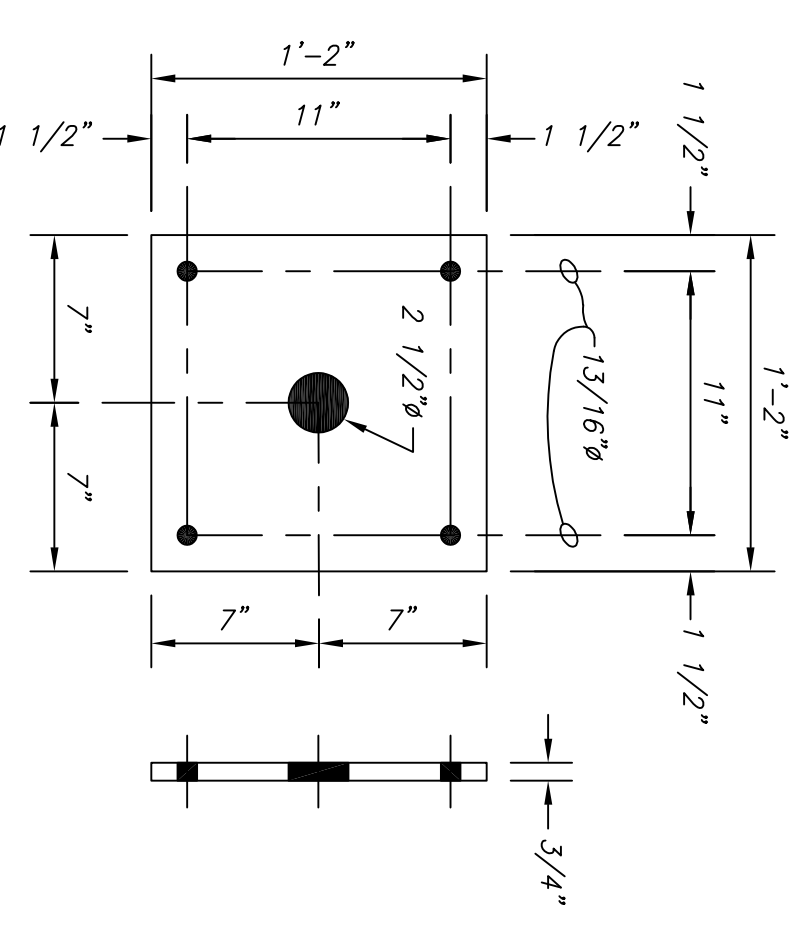
E12 DETAIL
3/4" X 9 GA X 4" ERW METAL
WEIGHT: 0.5 #
SCALE: 1/2"=1"



L500 DETAIL
L 4 X 3 X 1/2 X 0'-10 1/4"
WEIGHT: 9.5 #
SCALE: 1/4"=1"



P36 DETAIL
PL 3/4 X 14 X 1'-2"
WEIGHT: 41.7 #
SCALE: 1/8"=1"



P511 DETAIL
PL 3/4 X 14 X 1'-2"
WEIGHT: 41.7 #
SCALE: 1/8"=1"

NOTES

1. WELDING ELECTRODES SHALL BE EXXX.
2. VERIFY DIMENSION WITH ENGINEER BEFORE FABRICATION.
3. ALL FLAT PLATES SHALL BE PROCESSED USING COMPUTERIZED MACHINES FOR ACCURACY IN CUTTING BOLT HOLE PATTERNS & SLOTS.

ALL BOLTS AND HARDWARE SHALL BE GALVANIZED

MARK	DESCRIPTION	MATERIAL	FINISH
ERECTOR BOLTS	180 EACH 3/4" DIA 2 3/4" LONG A325 BOLTS WITH HEAVY HEX NUT AND HARDENED WASHER.	HSS SWAPS: ALL OTHER STEEL: AS PER SPECIFICATION.	HOT DIP GALVANIZED
	EACH 3/4" DIA 2 3/4" LONG A325 BOLTS WITH HEAVY HEX NUT AND HARDENED WASHER.		
	EACH 3/4" DIA 2 3/4" LONG A325 BOLTS WITH HEAVY HEX NUT AND HARDENED WASHER.		
	EACH 3/4" DIA 2 3/4" LONG A307 BOLTS WITH HEAVY HEX NUT AND HARDENED WASHER.		

Project: OKANOGAN COUNTY PUD NO. 1
TONASKET SUBSTATION

FILE NAME: TDNA-S6-02 115KV SWITCH-LDW.DWG

REV.	DATE	DESIGNED	ENGINEER	DRAWN	SHEET
A	10/16/19				
0	10/31/19				

Drawing: 115/13.8KV SUBSTATION 115KV SWITCH - LDW

SCALE	W.D. NO.	DATE	DWG #
KMS	AMN	KLO	2 DF 2
AS SHOWN	XXXXXX	10/16/19	TDNA-S6-02