

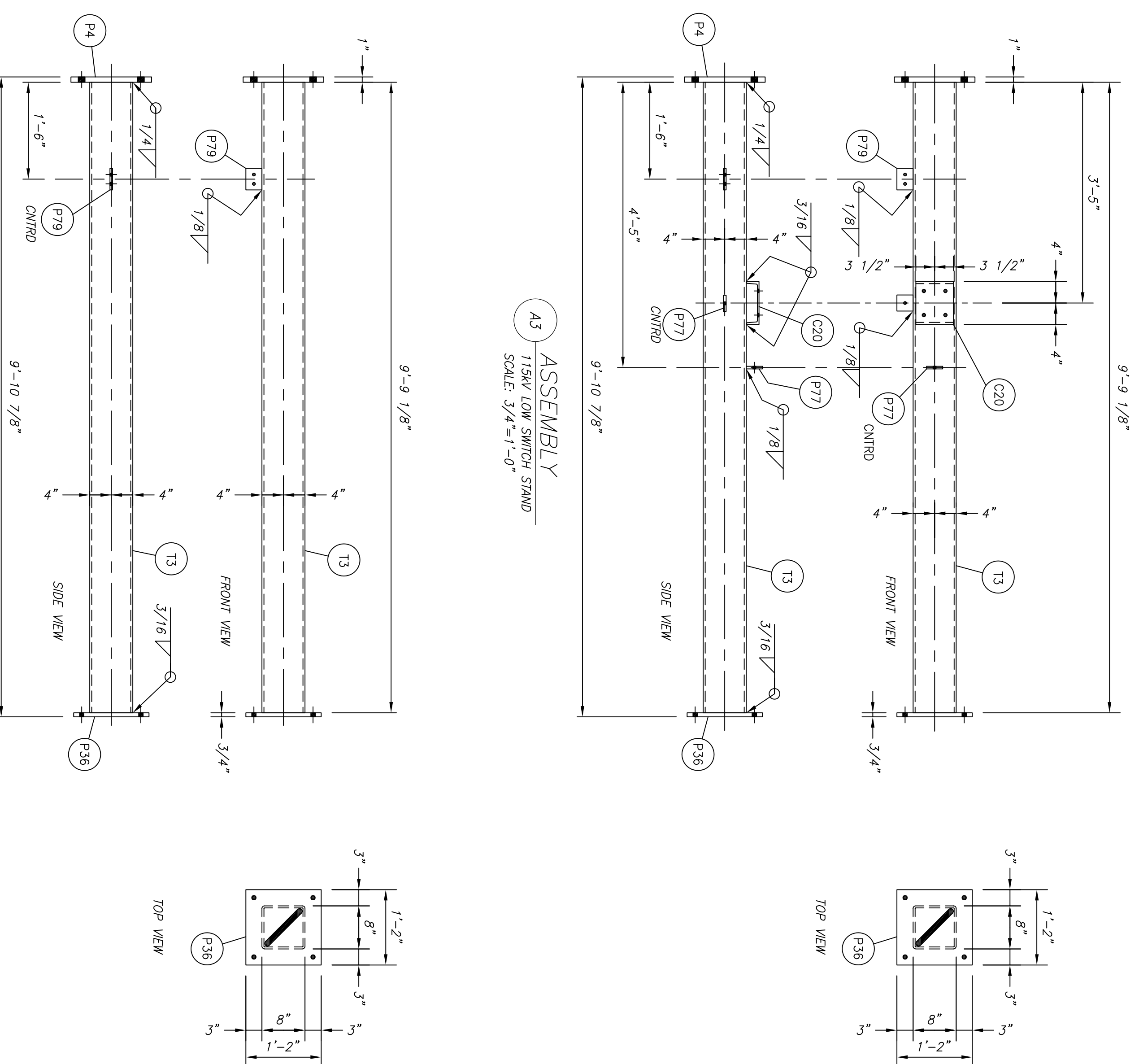
STRUCTURAL STEEL BILL OF MATERIAL

MARK	QTY	DESCRIPTION	LENGTH		WEIGHT		REMARKS
			FEET	INCHES	EACH	EXT	
A3	6	ASSEMBLY	-	-	369.8	2218.8	
T3	1	HSS 8 X 8 X 1/4	9	1/8	252.0	252.0	
C20	1	CG X 13.75	0	7	8.0	8.0	
P4	1	PL 1 X 15	1	3	63.8	63.8	
P36	1	PL 3/4 X 14	1	2	41.7	41.7	
P77	2	PL 1/2 X 3	0	3	1.3	2.6	
P79	1	PL 1/2 X 3	0	4	1.7	1.7	
A4	6	ASSEMBLY	-	-	359.2	2155.2	
T3	1	HSS 8 X 8 X 1/4	9	1/8	252.0	252.0	
P4	1	PL 1 X 15	1	3	63.8	63.8	
P36	1	PL 3/4 X 14	1	2	41.7	41.7	
P79	1	PL 1/2 X 3	0	4	1.7	1.7	
TOTAL WEIGHT THIS SHEET (NOT INCLUDING FINISH):					4374.0	POUNDS	

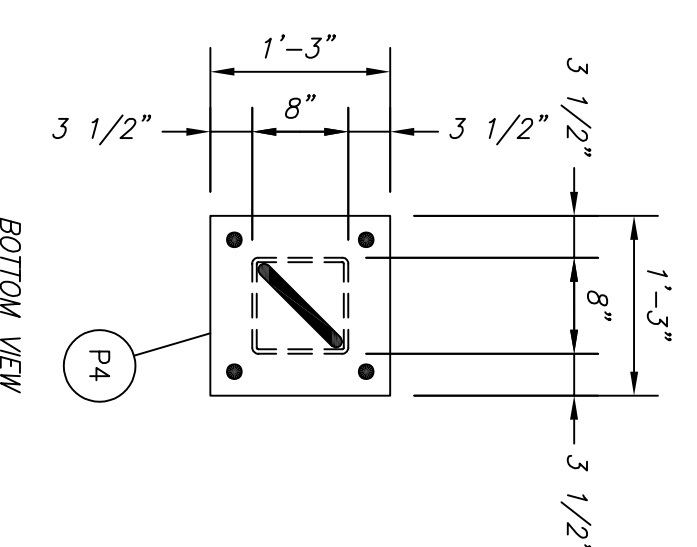
ERECTION BOLTS
 EACH _____ DIA _____ LONG A325 BOLTS WITH HEAVY HEX NUT AND HARDENED WASHER.
 EACH _____ DIA _____ LONG A325 BOLTS WITH HEAVY HEX NUT AND HARDENED WASHER.
 EACH _____ DIA _____ LONG A325 BOLTS WITH HEAVY HEX NUT AND HARDENED WASHER.
 EACH _____ DIA _____ LONG A307 BOLTS WITH HEAVY HEX NUT AND HARDENED WASHER.
 ALL BOLTS AND HARDWARE SHALL BE GALVANIZED

MARK	MATERIAL	FINISH
MARK EACH STRUCTURE WITH ASSEMBLY NUMBER, MARK COLLUMS APPROXIMATELY 2'-0" ABOVE BASEPLATE, MARK BEAMS APPROXIMATELY 2'-0" FROM ONE END, AS PER SPECIFICATION.	HSS SHAPES: ALL OTHER STEEL: SCHED OUTFRMS	HOT DIP GALVANIZED

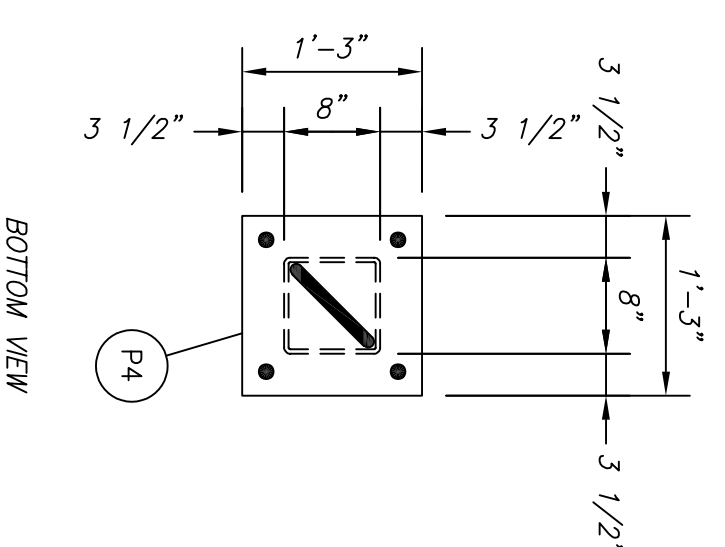
- NOTES**
1. WELDING ELECTRODES SHALL BE E70XX.
 2. ** VERIFY DIMENSION WITH ENGINEER BEFORE FABRICATION.
 3. ALL FLAT PLATES SHALL BE PROCESSED USING COMPUTERIZED MACHINES FOR ACCURACY IN CUTTING BOLT HOLE PATTERNS & SLOTS.



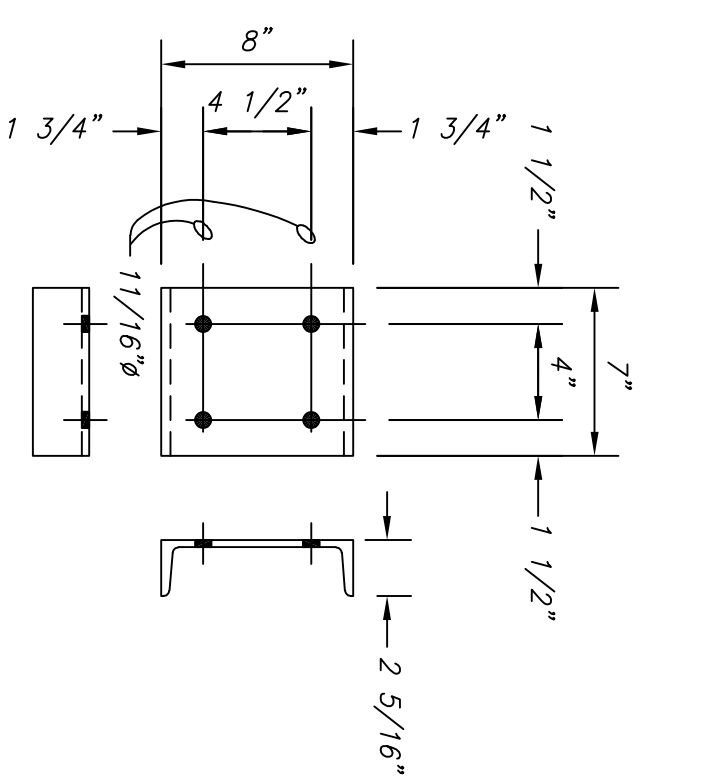
A4 ASSEMBLY
 115KV LOW SWITCH STAND
 SCALE: 3/4"=1'-0"



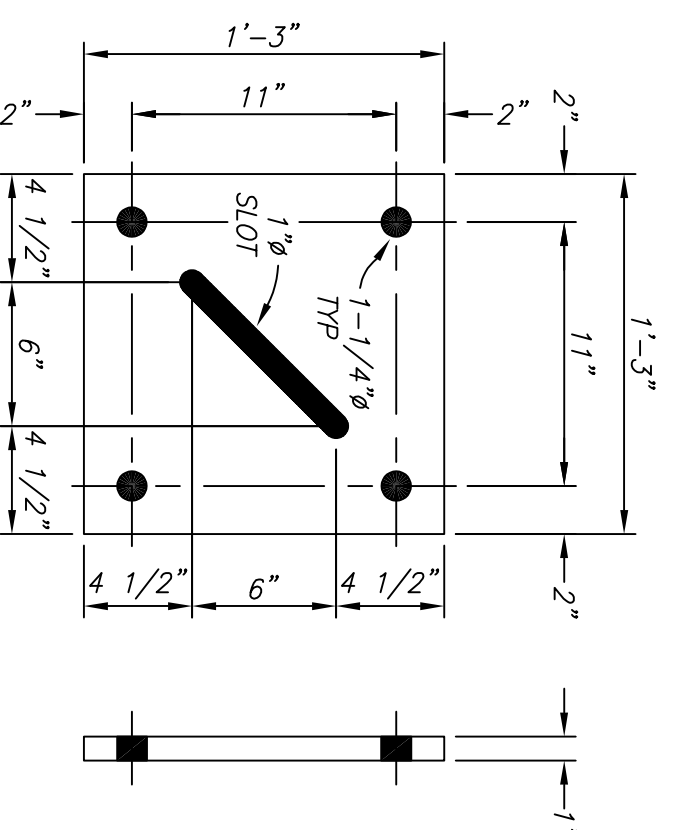
P4 DETAIL
 PL 1 X 15 X 1'-3"
 WEIGHT: 63.8 #
 SCALE: 1/8"=1"



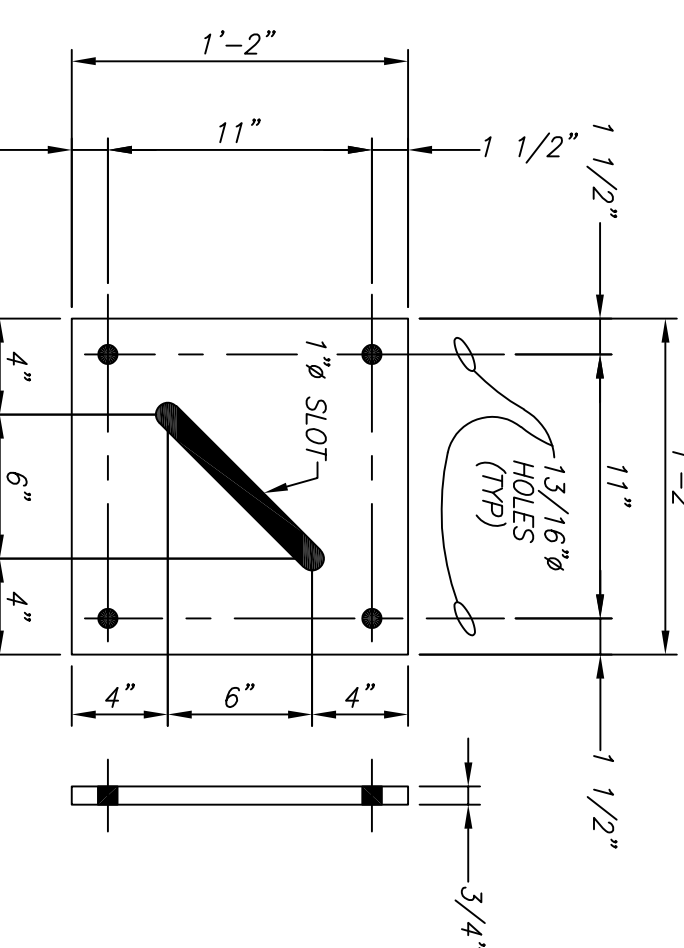
P4 DETAIL
 PL 1 X 15 X 1'-3"
 WEIGHT: 63.8 #
 SCALE: 1/8"=1"



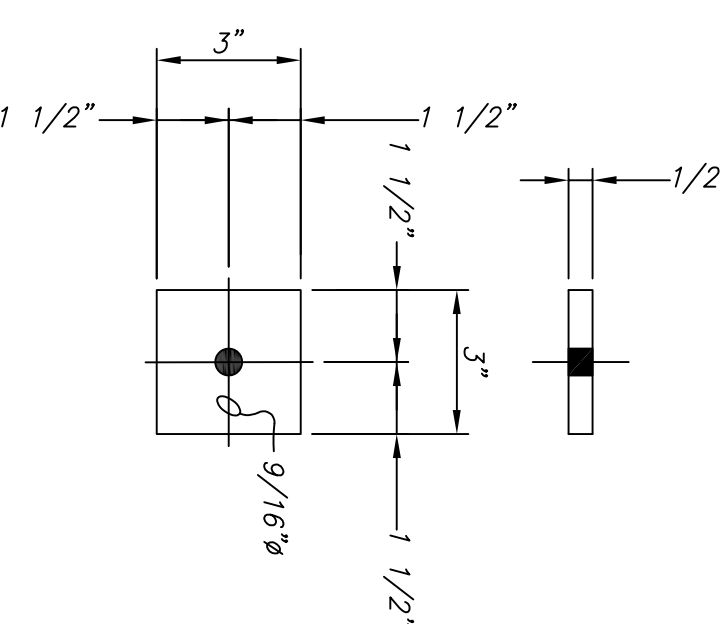
C20 DETAIL
 CG X 13.75 X 0'-7"
 WEIGHT: 8.0 #
 SCALE: 1/8"=1"



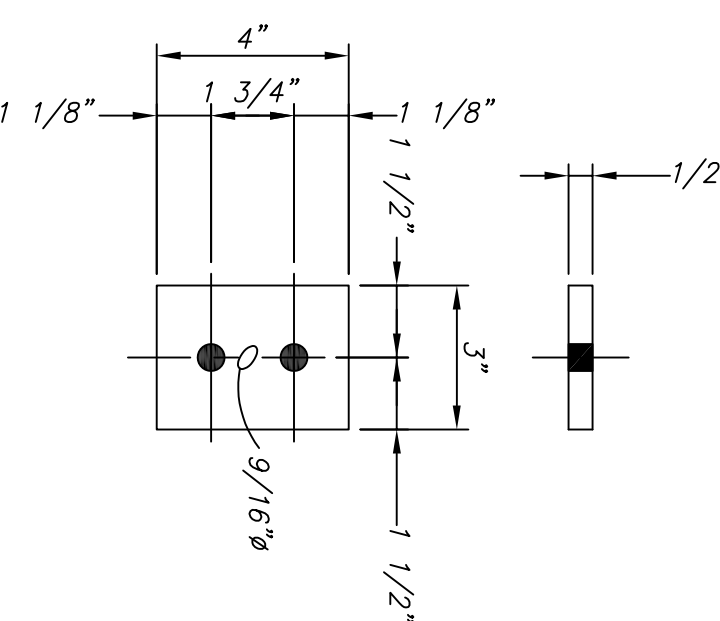
P4 DETAIL
 PL 1 X 15 X 1'-3"
 WEIGHT: 63.8 #
 SCALE: 1/8"=1"



P36 DETAIL
 PL 3/4 X 14 X 1'-2"
 WEIGHT: 41.7 #
 SCALE: 1/8"=1"



P77 DETAIL
 PL 1/2 X 3 X 0'-3"
 WEIGHT: 1.3 #
 SCALE: 1/4"=1"



P79 DETAIL
 PL 1/2 X 3 X 0'-4"
 WEIGHT: 1.7 #
 SCALE: 1/4"=1"

TDNA-S6-01

OKANOGAN COUNTY PUD No. 1			
TONASKET SUBSTATION			
Project:	TONASKET SUBSTATION	Project:	TONASKET SUBSTATION
File Name:	115/13.8KV SUBSTATION	Project:	TONASKET SUBSTATION
Rev.:	DATE	Project:	TONASKET SUBSTATION
A	10/16/19	Project:	TONASKET SUBSTATION
0	10/31/19	Project:	TONASKET SUBSTATION
DESIGNED	ENGINEER	DRAWN	SHEET
KMS	AMN	KLO	1 OF 2
SCALE	W.D. No.	DATE	DWG #
AS SHOWN	XXXXXXXX	10/16/19	TDNA-S6-01