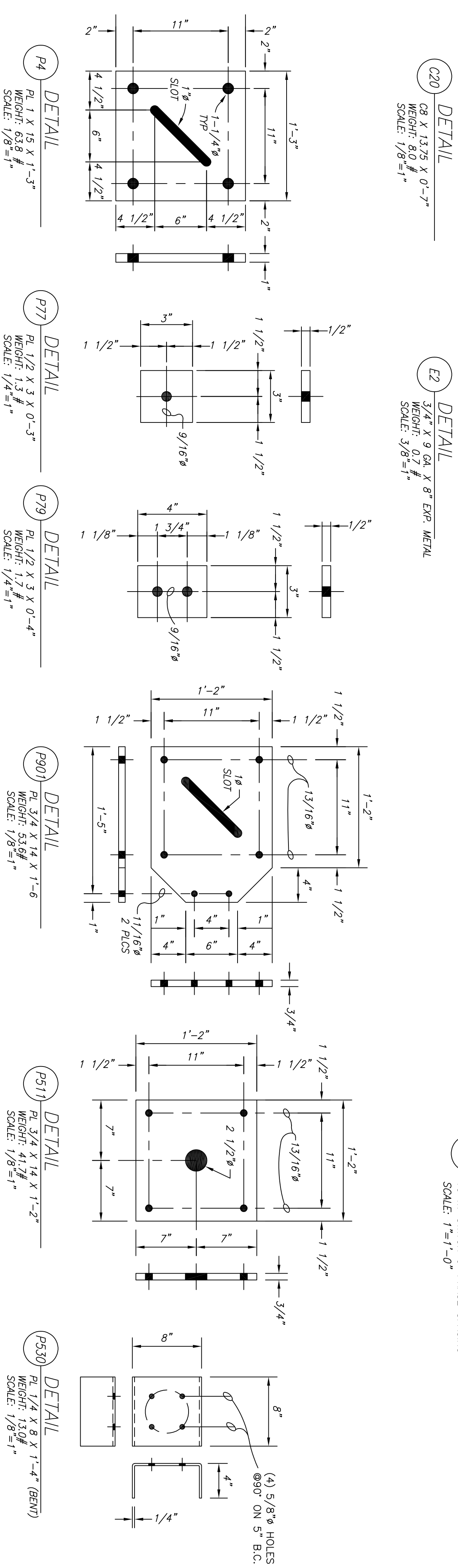
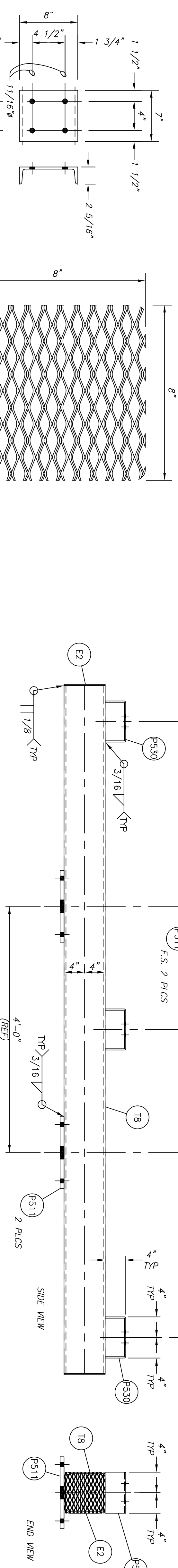
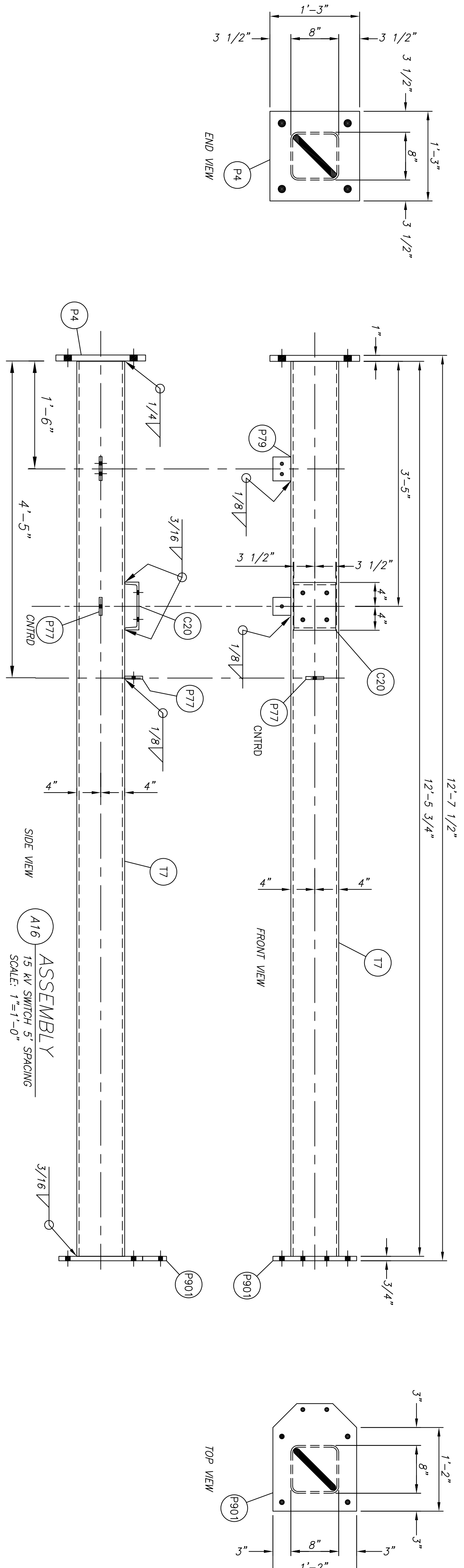


STRUCTURAL STEEL BILL OF MATERIAL

MARK	QTY	DESCRIPTION	LENGTH		WEIGHT		REMARKS
			FEET	INCHES	EACH	EXT	
A16	4	ASSEMBLY	-	-	451.9	1807.6	
T7	1	HSS 8 X 8 X 1/4	12	5 3/4	322.2	322.2	
C20	1	C8 X 13.75	0	7	8.0	8.0	
P4	1	PL 1 X 15	1	3	63.8	63.8	
P901	1	PL 3/4 X 14	1	6	53.6	53.6	
P77	2	PL 1/2 X 3	0	3	1.3	2.6	
P79	1	PL 1/2 X 3	0	4	1.7	1.7	
A17	2	ASSEMBLY	-	-	424.1	848.2	
T8	1	HSS 8 X 8 X 1/4	11	2	288.3	288.3	
P511	2	PL 3/4 X 14	1	2	41.7	83.4	
P530	3	PL 1/4 X 8	1	4	13.0	39.0	
E2	2	3/4 X 9 GA X 8"	0	8	0.7	1.4	
TOTAL WEIGHT THIS SHEET (NOT INCLUDING FINISH):					2643.8	POUNDS	



MARK	QTY	DESCRIPTION	LENGTH	WEIGHT	REMARKS
ERECTOR BOLTS	20	EACH 3/4" DIA 2 3/4" LONG A325 BOLTS WITH HEAVY HEX NUT AND HARDENED WASHER			
		EACH DIA LONG A325 BOLTS WITH HEAVY HEX NUT AND HARDENED WASHER			
		EACH DIA LONG A325 BOLTS WITH HEAVY HEX NUT AND HARDENED WASHER			
		EACH DIA LONG A307 BOLTS WITH HEAVY HEX NUT AND HARDENED WASHER			

ALL BOLTS AND HARDWARE SHALL BE GALVANIZED

MARK EACH STRUCTURE WITH ASSIGNED HSS SPARES: ALL OTHER STEEL: APPROXIMATELY 2'-0" FROM ONE END. AS PER SPECIFICATION.

FINISH: HOT DIP GALVANIZED

NOTES

1. WELDING ELECTRODES SHALL BE E70XX.
2. VERIFY DIMENSION WITH ENGINEER BEFORE FABRICATION.
3. ALL HOLE DIMENSIONS SHALL BE VERIFIED BY SWITCH MANUFACTURER FOR ACCURACY IN CUTTING BOLT HOLE PATTERNS & SLOTS.

Project: TONASKET SUBSTATION		Drawing: 115/138KV SUBSTATION	
File Name: TONAS-S11-01 15KV SWITCH		SFT.DWG	
REV.:	DATE	DESIGNED	ENGINEER
A	10/16/19	AMN	DRL
0	10/31/19	SCALE	W.D. NO.
		AS SHOWN	XXXXXX
		DATE	10/16/19
		DWG #	TONA-S11-01