

STRUCTURAL STEEL BILL OF MATERIAL

MARK	QTY	DESCRIPTION	LENGTH		WEIGHT		REMARKS
			FEET	INCHES	EACH	EXT	
A15	2	ASSEMBLY	-	-	531.6	1053.2	
T18	1	HSS 6 X 6 X 1/4	19	9	375.6	375.6	
P536	2	PL 3/4 X 14	1	2	41.7	83.4	
L550	3	L 3 X 3 X 3/8	3	0	21.6	64.8	
P77	6	PL 1/2 X 3	0	3	1.3	7.8	
A23	2	ASSEMBLY	-	-	608.4	1216.8	
T18	1	HSS 6 X 6 X 1/4	19	9	375.6	375.6	
T20	2	HSS 4 X 4 X 3/16	1	3	11.7	23.4	
C512	1	C6 X 10.5	12	0	126.0	126.0	
P536	2	PL 3/4 X 14	1	2	41.7	83.4	

TOTAL WEIGHT THIS SHEET (NOT INCLUDING FINISH): 2280.8 POUNDS

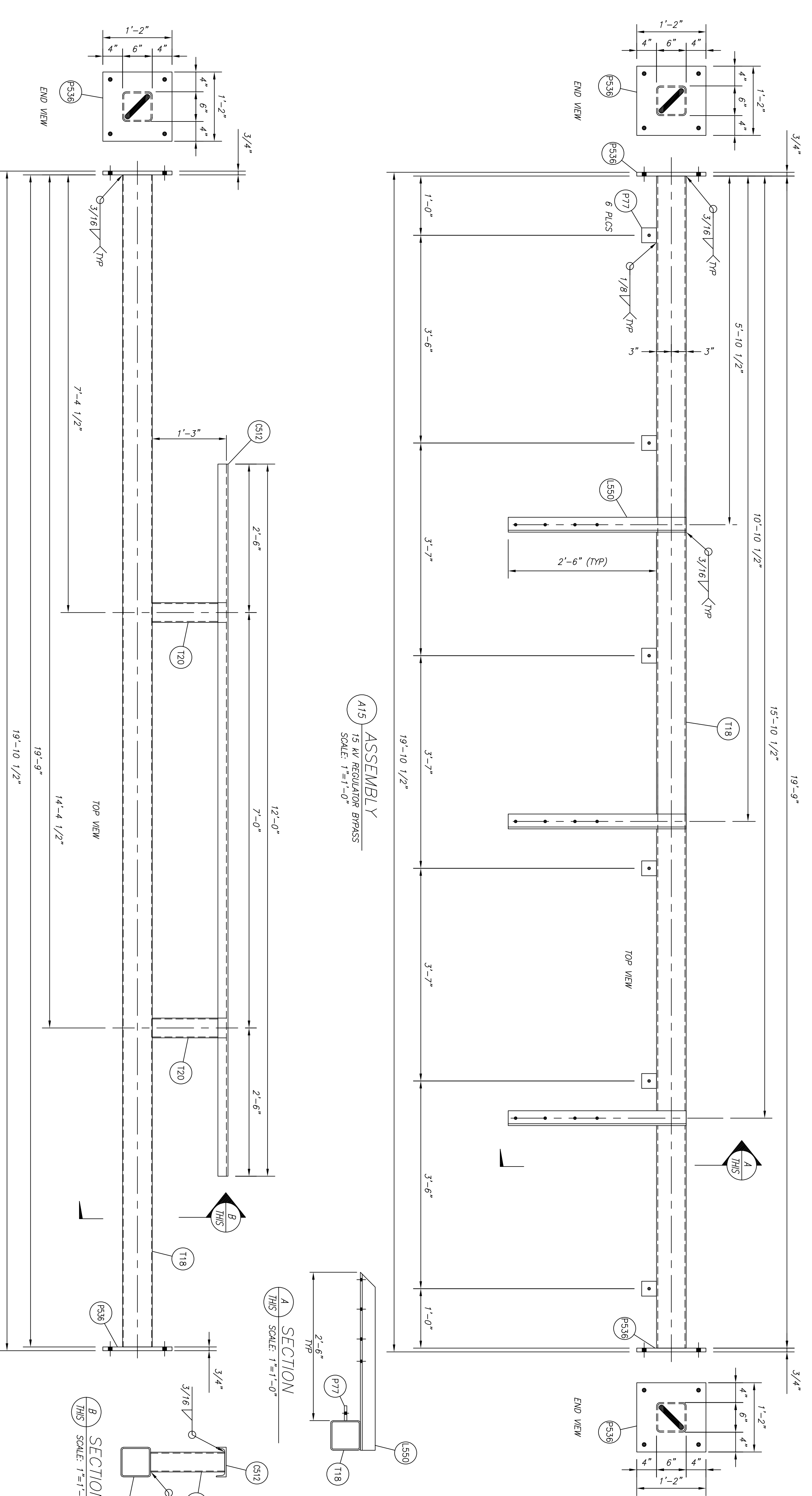
ERECTOR BOLTS

40	EACH	3/4"	DIA	2	3/4"	LONG A325 BOLTS WITH HEAVY HEX NUT AND HARDENED WASHER
	EACH		DIA			LONG A325 BOLTS WITH HEAVY HEX NUT AND HARDENED WASHER
	EACH		DIA			LONG A325 BOLTS WITH HEAVY HEX NUT AND HARDENED WASHER
	EACH		DIA			LONG A307 BOLTS WITH HEAVY HEX NUT AND HARDENED WASHER

ALL BOLTS AND HARDWARE SHALL BE GALVANIZED

MARK	MATERIAL	FINISH
MARK EACH STRUCTURE WITH ASSEMBLY NUMBER, MARK COLUMNS APPROXIMATELY 2'-0" ABOVE BASEPLATE, MARK BEAMS APPROXIMATELY 2'-0" FROM ONE END, AS PER SPECIFICATION.	HSS SHAPES: PIPE: ALL OTHER STEEL	ASTM A500, GRADE B ASTM A53, GRADE B ASTM A36, UNLESS SPECIFIED OTHERWISE
		HOT DIP GALVANIZED

- NOTES
1. WELDING ELECTRODES SHALL BE E70XX.
  2. \* VERIFY DIMENSION WITH ENGINEER BEFORE FABRICATION.
  3. ALL FLAT PLATES SHALL BE PROCESSED USING COMPUTERIZED MACHINES FOR ACCURACY IN CUTTING BOLT HOLE PATTERNS & SLOTS.



A15 ASSEMBLY  
SCALE: 1"=1'-0"

A23 ASSEMBLY  
SCALE: 1"=1'-0"

P77 DETAIL  
PL 1/2 X 3 X 0'-3"  
WEIGHT: 1.3 #  
SCALE: 1/4"=1"

P536 DETAIL  
PL 3/4 X 14 X 1'-2"  
WEIGHT: 41.7 #  
SCALE: 1/8"=1"

L550 DETAIL  
L 3 X 3 X 3/8 X 4'-0"  
WEIGHT: 21.6 #  
SCALE: 1/8"=1"

Project: DKANOGAN COUNTY PUD NO. 1  
Drawing: 115/138KV SUBSTATION  
15KV REGULATOR BYPASS

REV.	DATE	DESIGNED	ENGINEER	DRAWN	SHEET
A	10/16/19				3 OF 3
0	10/31/19				

SCALE: W.D. NO. DATE DWG #  
AS SHOWN XXXXXX 10/16/19 TDNA-S10-03