

STRUCTURAL STEEL BILL OF MATERIAL

MARK	QTY	DESCRIPTION	LENGTH		WEIGHT		REMARKS
			FEET	INCHES	EACH	EXT	
A12	4	ASSEMBLY	-	-	294.6	1138.4	
T14	1	HSS 8 X 8 X 1/4	16	8	47.3	47.3	
P4	1	PL 1 X 15	1	3	63.8	63.8	
P36	1	PL 3/4 X 14	1	2	41.7	41.7	
P77	5	PL 1/2 X 3	0	3	1.3	6.5	
P79	1	PL 1/2 X 3	0	4	1.7	1.7	
P511	2	PL 3/4 X 14	1	2	41.7	83.4	
P114	1	PL 1/4 X 12	1	3	12.8	12.8	
P205	1	PL 1/4 X 6	1	2	6.0	6.0	
P123	1	PL 1/4 X 8	1	4	9.1	9.1	
L5	2	L 3 1/2 X 3 1/2 X 3/8	0	6	4.3	8.6	
U1	1	UNISTRUT, P2000, 1 5/8" WIDTH	0	6	0.6	0.6	
U3	2	UNISTRUT, P2000, 1 5/8" WIDTH	2	0	3.5	7.0	
TOTAL WEIGHT THIS SHEET (NOT INCLUDING FINISH):					1142.3		POUNDS

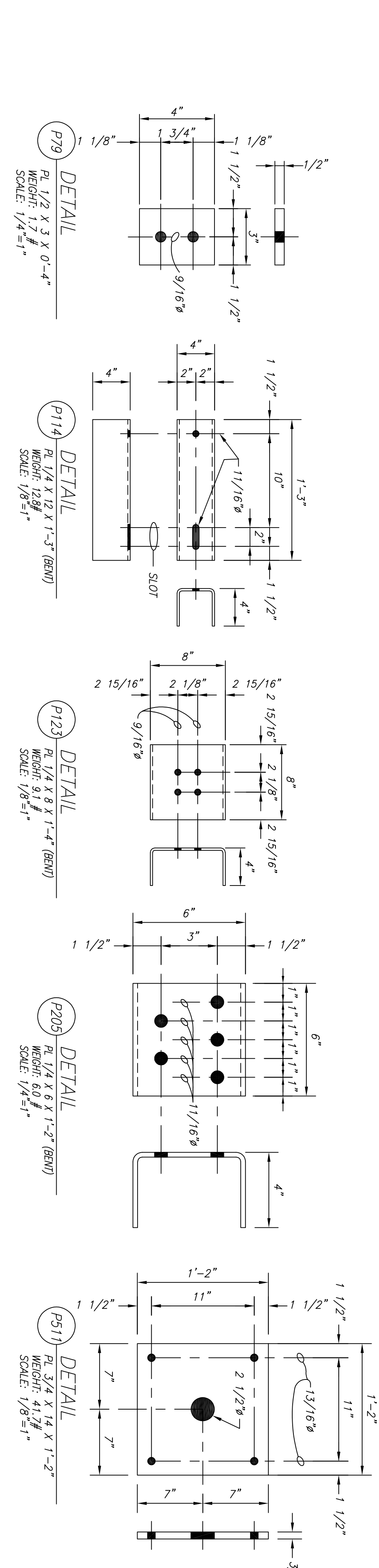
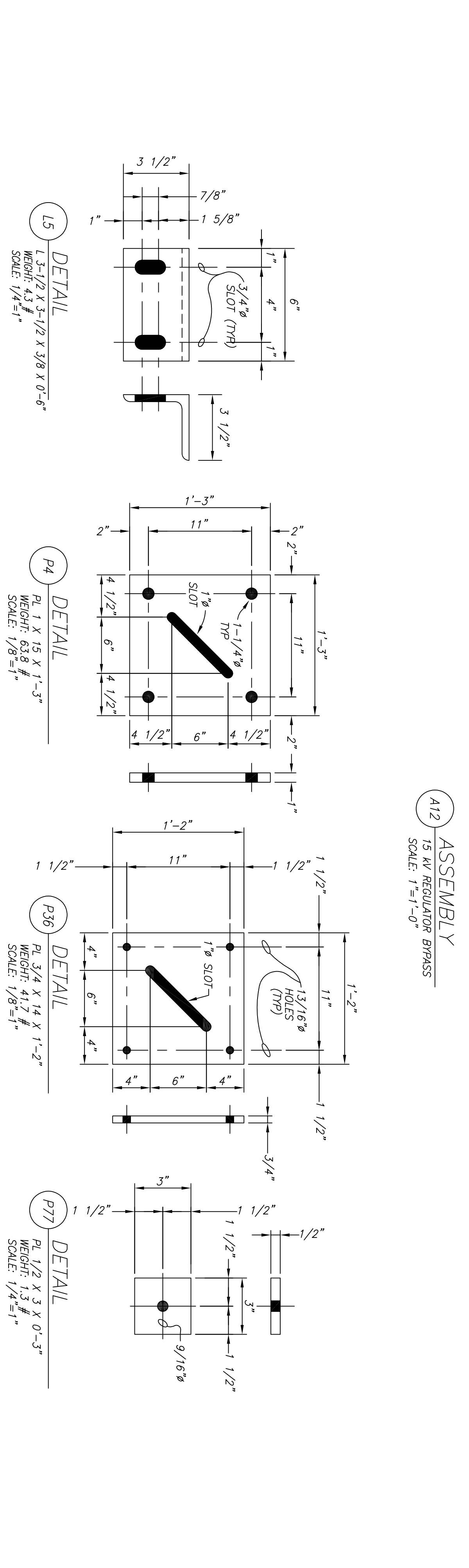
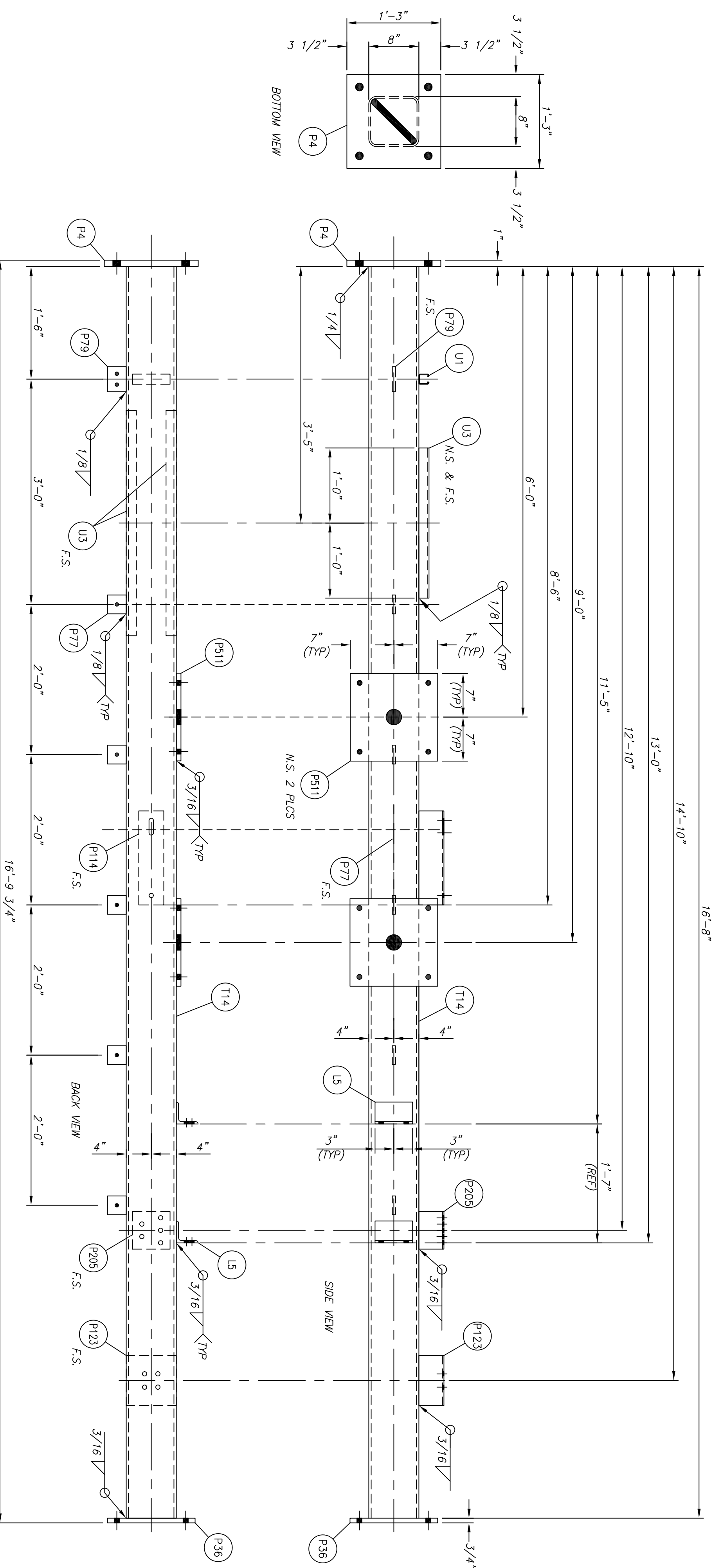
ERECTOR BOLTS			
EACH	DIA	LONG A325 BOLTS WITH HEAVY HEX NUT AND HARDENED WASHER	
EACH	DIA	LONG A325 BOLTS WITH HEAVY HEX NUT AND HARDENED WASHER	
EACH	DIA	LONG A325 BOLTS WITH HEAVY HEX NUT AND HARDENED WASHER	
EACH	DIA	LONG A307 BOLTS WITH HEAVY HEX NUT AND HARDENED WASHER	

ALL BOLTS AND HARDWARE SHALL BE GALVANIZED

MARK	MATERIAL	FINISH
MARK EACH STRUCTURE WITH ASSEMBLY MARKS AND IDENTIFY ALL OTHER STEEL APPROXIMATELY 2'-0" FROM ONE END. AS PER SPECIFICATION.	HSS SHAPES ASTM A500 GRADE B ASTM A575 ALL OTHER STEEL SPECIFIED OTHERWISE	HOT DIP GALVANIZED

NOTES

1. WELDING ELECTRODES SHALL BE E70XX.
2. WELDING DIMENSION WITH DIMENSION BEFORE FABRICATION.
3. ALL HOLE PATTERNS SHALL BE CUT ON COMPUTERIZED MACHINES FOR ACCURACY IN CUTTING BOLT HOLE PATTERNS & SLOTS.



TDNA-S10-01

Project:		DKANOGAN COUNTY PUD No. 1	
Drawing:		115/138KV SUBSTATION	
FILE NAME:		BYPASS.DWG TONASKET SUBSTATION	
REV.	DATE	DESIGNED	
A	10/16/19	ENGINEER	DRAWN
0	10/31/19	AMN	DRL
SCALE		W.D. No.	DATE
AS SHOWN		XXXXXX	10/16/19
			TDNA-S10-01